

## Support Stands

### Support Stands

Standard Support Stands are made entirely of 303 stainless steel. Stand consists of a sturdy base that can accommodate vessels up to 18" (457mm) in diameter within the "U" shaped base. The threaded stainless steel support rod is 0.63" (16mm) in diameter and is screwed into the support stand base. The base measures 17.75" (451mm) across and 10.5" (267mm) deep overall.

\* Includes support rod.

Description	Part Number
Support Stand with 23" (58.4cm) Rod	08129-01
Support Stand with 28" (71.1cm) Rod	04344-00
Support Stand with 36" (91.4cm) Rod	08129-02
Support Stand with 40" (101.6cm) Rod	08129-03
Support Stand with 48" (121.9cm) Rod	08129-04
Support Stand with 60" (152.4cm) Rod	08129-05

### Support Stand Stabilizer Knobs

Support Stand Stabilizer Knobs can be added to the two additional threaded holes in the base legs to secure the stand to a bench top. (For use with Standard Support Stands only)

Description	Part Number
Support Stand Stabilizer Knobs (2 per pack)	08129-83

### Heavy-Duty Support Stands

Heavy-Duty Support Stand was designed to permit cylindrical vessels up to 12" (305mm) in diameter to sit close to the support rod. Support rod is ideal for mounting stirring motors for heavy equipment. Each of the four corners rests on a rubber cushion. The cast iron base measures 16.5" (419mm) across and 12" (305mm) deep overall and has a black enamel finish.

\* Includes support rod.

Description	Part Number
Heavy-Duty Support Stand with 18" (45.7) Rod	08021-80
Heavy-Duty Support Stand with 23" (58.4cm) Rod	08126-23
Heavy-Duty Support Stand with 28" (71.1cm) Rod	08126-24
Heavy-Duty Support Stand with 36" (91.4cm) Rod	08126-25
Heavy-Duty Support Stand with 40" (101.6cm) Rod	08126-26
Heavy-Duty Support Stand with 48" (121.19cm) Rod	08126-27
Heavy-Duty Support Stand with 60" (152.4 cm) Rod	08126-28

### Replacement Support Rods

Description	Diameter	Part Number
18" (45.7cm) stainless steel rod	0.63" (16mm)	08129-73
23" (58.4cm) stainless steel rod	0.63" (16mm)	08129-76
28" (71.1cm) stainless steel rod	0.63" (16mm)	04344-10
36" (91.4cm) stainless steel rod	0.63" (16mm)	08129-77
40" (101.6cm) stainless steel rod	0.63" (16mm)	08129-78
48" (121.9cm) stainless steel rod	0.63" (16mm)	08129-79
60" (152.4cm) stainless steel rod	0.63" (16mm)	08129-81



# CLAMPS & SUPPORTS

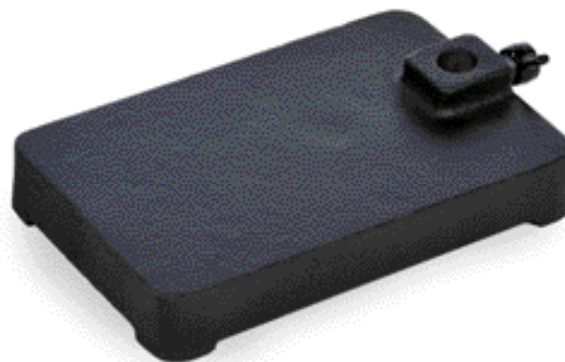
## Support Stands

Cast iron support stand bases are constructed with black enamel finish for chemical resistance and durability. All bases feature a built-in support rod holder with locking knob that accepts a 0.51" (13mm) diameter support rod. U-shaped base features three built-in support rod holders.

\* Support rods are not included.

### Rectangular Base Support Stand, cast iron

Description	Dimensions	Part Number
Rectangular Base (only)	4 x 6" (102 x 152mm)	08129-44
Rectangular Base (only)	5 x 8" (127 x 203mm)	08129-45
Rectangular Base (only)	6 x 9" (152 x 229mm)	08129-46
Rectangular Base (only)	8 x 10" (203 x 254mm)	08129-47



08129-47

### Tripod Base Support Stand, cast iron

Description	Overall Footprint Diameter	Part Number
Tripod Base (only)	14.75" (375mm)	08129-48



08129-48

### U-Shaped Base Support Stand, cast iron

Description	Dimensions	Part Number
U-Shaped Base (only)	7 x 7" (178 x 178mm)	08129-49



08129-49

## Aluminum Support Rods

Description	Diameter	Part Number
12" (305mm) Aluminum Rod	0.51" (13mm)	08025-66
18" (457mm) Aluminum Rod	0.51" (13mm)	08025-68
24" (610mm) Aluminum Rod	0.51" (13mm)	08025-70
36" (914mm) Aluminum Rod	0.51" (13mm)	08025-72

## Stainless Steel Support Rods

Description	Diameter	Part Number
12" (305mm) Stainless Steel Rod	0.51" (13mm)	08040-66
18" (457mm) Stainless Steel Rod	0.51" (13mm)	08040-68
24" (610mm) Stainless Steel Rod	0.51" (13mm)	08040-70
36" (914mm) Stainless Steel Rod	0.51" (13mm)	08040-72