



VapLock™ HPLC Solvent Safety Systems

3 Easy Ways to Protect Your Laboratory Staff and Environment

1. Bottle caps maintain solvent purity
2. Waste solvent vapors safely contained
3. Adsorb hazardous vapors

VapLock Closed Solvent Containment Systems for Your HPLC

VapLock is a safety solution for scientists, laboratory safety personnel and researchers worldwide, designed to ensure proper delivery and waste containment of industrial chemicals and solvents. A versatile product solution, VapLock conforms to a broad spectrum of laboratory and industrial applications. Useful wherever safety protocol for chemical handling is required or preferred, and through closed-system technology reduces harmful emissions which are potentially hazardous to employees and the environment.

Our mission is to create a safer, healthier and cleaner workplace by providing unique, effective and price-sensitive solutions to fluid handling problems in the laboratory.

For a complete list of VapLock Closed Systems, Manifolds and Kits, go to www.coleparmer.com/vaplock-solvent-safety-products.

HPLC Color-Coded Bottle Cap Kits

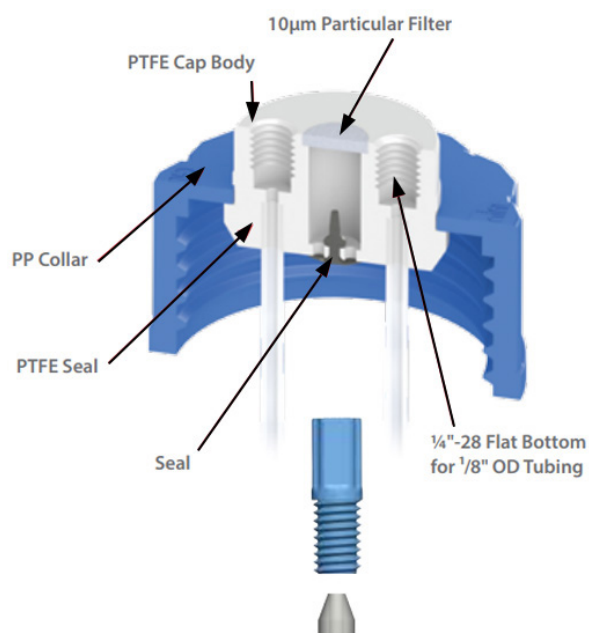
- Color coding allows for easy solvent identification
- Less expensive than ordering individual components
- Integrated check valves allow closed-system solvent delivery for health and safety concerns

VapLock™ HPLC Solvent Safety System

VapLock Bottle Caps

Bottle caps prevent hazardous vapors from escaping into the laboratory and maintain the cleanliness and purity of your valuable HPLC mobile phases.

Features



Protects the environment and your analytical results –

Prevent hazardous VOC's evaporating from your HPLC solvent reservoir into the laboratory. The container remains securely closed and no air is allowed into your HPLC, so your analyses are not compromised by contamination and solvent composition change by evaporation.

Easy to use and change your bottles – Bottles are removed without movement and tangling of your tubes for simple, quick solvent changes.

Easy to connect and reliable – The cap creates a tight seal against the solvent reservoir. Inlet tubing is connected into threaded connection ports creating a perfect seal. Filtered air enters the container to replace fluid withdrawn. A built-in check valve prevents solvent vapor from escaping into the workplace. All materials are HPLC solvent compatible.

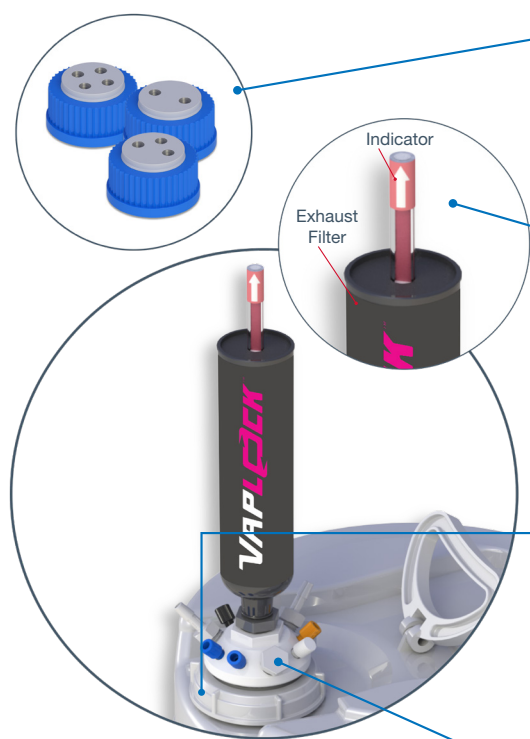
Maintain a safe and compliant system – Help you face safety and quality inspections without anxiety!

VapLock™ HPLC Solvent Safety System

VapLock Waste Manifold Kits

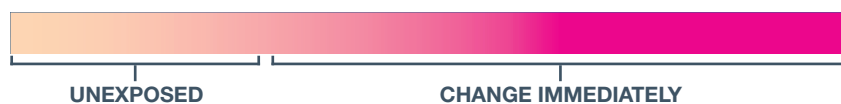
Kits connect to any HPLC system. All waste solvent is contained in a fully enclosed and sealed system. Hazardous solvent vapors are absorbed and prevented from entering your environment.

Features



PROTECTION – Minimize hazardous VOCs escaping from your HPLC solvent reservoir into the laboratory. Protect your analysis from compromise by particulate contamination and solvent composition change by evaporation.

INFORMATIVE – The activated carbon filter adsorbs hazardous solvent vapors. Our breakthrough indicator shows when the carbon filter is fully loaded and needs to be replaced.



SIMPLE – The waste manifold attaches to your HPLC solvent waste container creating a gastight seal. The manifold has a free spinning collar allowing for a quick disconnect and prevents any tangling of solvent lines connected to your system.

ADAPTABLE – Each manifold offers multiple connection ports for any waste line to be securely connected from your HPLC. *Kits include all fittings required for a typical HPLC instrument.*

VapLock™ HPLC Solvent Safety System

VapLock Waste Manifolds and Kits

12018-58



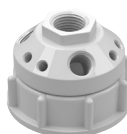
for GL38 containers

12019-00



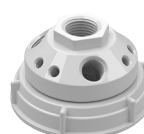
for 53B carboys

12019-12



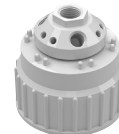
for 61 mm containers

12019-24



for 70 mm rieke

12019-42



for 83B carboys



All kits include a fittings kit to connect with HPLC systems



Replacement filter cartridge with indicator

Ordering Information

Description	Item Number
Solvent Delivery Caps – Cap Only	
Bottle Cap, GL45 2-ported with (2) 1/4-28 ports PTFE with Polypropylene spin collar and FFKM air inlet valve	12018-08
Bottle Cap, GL45 4-ported with (4) 1/4-28 ports PTFE with Polypropylene spin collar and FFKM air inlet valve	12018-09
Bottle Cap, GL45 2-ported with (2) 1/4-28 ports PTFE with propylene spin collar and EPDM air inlet valve	12018-06
Bottle Cap, GL45 4-ported with (4) 1/4-28 ports PTFE with polypropylene spin collar and EPDM air inlet valve	12018-07
Exhaust Filters – Filter(s) and Indicator	
VapLock Exhaust Filter, 75g, activated carbon with HDPE cartridge 1/4 NPT female port	12019-79
VapLock Exhaust Filter, 5PK, 75g, activated carbon with HDPE cartridge 1/4 NPT female port	12019-81
VapLock Exhaust Filter, 75g, activated carbon with HDPE cartridge 1/4 NPT female port and breakthrough indicator	12019-80
Waste Manifold Kits – Manifold, Filter with Indicator, Adapters, Plugs, and Tubing with Connections	
Solvent Waste Kit, PTFE, 38-730, 1 x 1/2" NPTF, 3 x 1/4" NPTF, 6 x 1/4"-28 UNFF; 1 each	12018-63
Solvent Waste Kit, PP, 38 mm Wako, 1 x 1/2" NPTF, 3 x 1/4" NPTF, 6 x 1/4"-28 UNFF; 1 each	12018-68
Solvent Waste Kit, PTFE, 38 mm Wako, 1 x 1/2" NPTF, 3 x 1/4" NPTF, 6 x 1/4"-28 UNFF; 1 each	12018-69
Solvent Waste Kit, PTFE, GL45, 1 x 1/2" NPTF, 3 x 1/4" NPTF, 6 x 1/4"-28 UNFF; 1 each	12018-75
Solvent Waste Kit, PP, DIN 45, 1 x 1/2" NPTF, 3 x 1/4" NPTF, 6 x 1/4"-28 UNFF; 1 each	12018-80
Solvent Waste Systems– 20 L Waste Container, Manifold, QC Fittings, Plugs, and Filters	
Complete Solvent Collection System, quick disconnect, PP manifold, 20 L	12020-69
Complete Solvent Collection System, quick disconnect, PTFE manifold, 20 L	12020-70

USA:
+1.800.323.4340
+1.847.549.7600

Canada: +1.800.363.5900
China: +86.21.5109.9909
France: +33 (0) 1486 37800
Germany: +49 (0) 9377 92030

India: +1.800.266.1244
Italy: +39 (0) 2 84349215
UK: +44 (0) 1480.272279
All other countries: +1.847.549.7600

Cole-Parmer®
coleparmer.com