

MASTERFLEX[®]

Levitronix[®] Flowmeters and Pumps

High-precision products
designed for your
high-purity fluids



1-800-637-3739
1-847-381-7050

Masterflex.com

LEVIFLOW® Integrated Ultrasonic Flowmeter

Simple, compact design reduces cabling and setup time

- Noninvasive flow measurement eliminates contamination
- Requires no special maintenance due to lack of moving parts
- Easily configure flow sensor parameters with PC software
- No corner or dead zones with straight-through flow path

Designed to measure high-purity fluids in the semiconductor and chemical industries. Flow is sensed by two piezoelectric transducers mounted at both ends of the measuring path of the fluid stream, generating and receiving an ultrasonic wave.

The flowmeter consists of a 3/8" (9.5 mm) PFA tube (9.52 mm OD, 6.38 mm ID), a flow sensor, and an integrated converter with a digital signal processor (DSP) containing special algorithms, which increase the robustness of the measurement against bubbles. Unit features one connection cable, an analog and digital output, a two-wire RS-485 bus to communicate with a computer, high/low LED alarm indicators, LED flow indicator, zero adjustment activation button, and a 16.4-ft (5-m) PVC extension cable.

Accessories

MK-24500-22 USB to RS-485 adapter for computer communications



Specifications

- Operating temperature: 32 to 122°F (0 to 50°C)
- Fluid temperature: 50 to 176°F (10 to 80°C)
- Max pressure: 5 bar (72.5 psi)
- Wetted materials: PFA
- Housing material: PPS (body), FKM (sealing gaskets), PEEK™ (screws), and PET (label)
- Output: MODBUS®, RS-485, and 0 to 20 mA
- Power: 24 VDC



Model number	Flow range (LPM)	Accuracy of reading at 68°F (20°C) water	Kinematic viscosity	Catalog number
LFIF-06 + LFE-E-1-50	0 to 10	>1.7 L/min: ±2%; <1.7 L/min: ±34 mL/min	0.36 to 1.3 cSt	MK-24500-21

LEVIFLOW® Clamp-On Ultrasonic Flowmeters

Protect the integrity of your working fluid

- Ensure accurate flow rates of fluids in flexible tubing without any contamination
- Easily configure flow sensor parameters via software

These noninvasive flow measurement systems are ideal for your sterile high-purity and single-use applications—no moving parts to contaminate or generate particulates. Each system requires a starter kit and clamp-on flow sensor; order separately.

Starter kit includes a single-channel flow converter with DSP for processing the sensor's signals, connection cables for meter to PC and meter to flow sensor, power supply and cord, and configuration software on USB stick. Converter also features a 4-digit LED display indicating the flow value.

Flow sensors clamp over your existing silicone or C-Flex® tubing lines and are easily reusable—remove sensor clamp, dispose of flexible tubing, and fix sensor over a new line. Sensors are IP65 rated and feature a watertight connection box. Accuracy is ±3%.

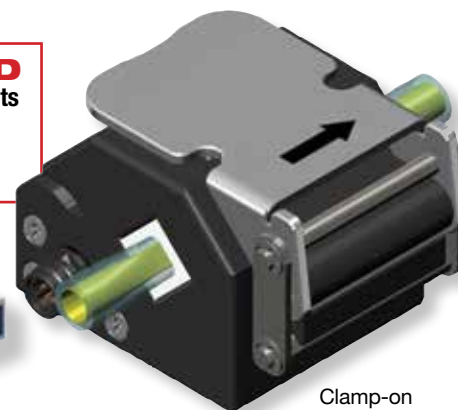


REQUIRED System Components

- 1) Starter kit
- 2) Flow sensor



Flow converter (included with starter kit)



Clamp-on flow sensor

1. Starter Kit



Model	Fluid temperature	Power	Catalog number
LFC-1C-PC-SK	50 to 140°F (10 to 60°C)	24 VDC ±10%	MK-24500-07

2. Clamp-On Flow Sensors



Model	For tubing OD	Flow range	Max fluid pressure	Catalog number
LFSC-08D	8 mm	0 to 4 L/min	94.3 psi	MK-24500-18
LFSC-12D	12 mm	0 to 20 L/min	94.3 psi	MK-24500-19
LFSC-22D	22 mm	0 to 80 L/min	58 psi	MK-24500-20

1-800-637-3739 | 1-847-381-7050

Masterflex.com

LEVIFLOW® Single-Use Precision Ultrasonic Flowmeters

Be ultraclean with your high-purity fluids

- Avoid contamination—no moving or obtrusive parts
- Nonintrusive design won't affect the working fluid
- Easily configure flow sensor parameters via software
- Integrated sanitary clamp fittings for one-time use

These noninvasive ultrasonic flowmeter systems are designed for use in applications where cleanliness and precision are a necessity! The starter kit includes components to get a system in place, then just choose a flow sensor at your desired flow range.

Starter kit includes a single-channel flow converter with DSP for processing the sensor's signals, connection cables for meter to PC and meter to flow sensor, power supply and cord, and configuration software on a USB stick. Converter also features a 4-digit LED display indicating the flow value.

Flow sensors feature integral sanitary Tri-Clamp® connections and polypropylene (FDA, USP VI, ADI-free) wetted material; sterile models are gamma irradiated. Sensors are IP65 rated and have a watertight connection box. Accuracy is ±1%.



REQUIRED System Components

- 1) Starter kit
- 2) Flow sensor



Flow converter (included with starter kit)



Single-use flow sensor

1. Starter Kit



Model number	Fluid temperature	Power	Catalog number
LFC-1C-PC-SK	50 to 140°F (10 to 60°C)	24 VDC ±10%	MK-24500-07

2. Single-Use Flow Sensors



Model number	Flow range*	Connection size	Sterile	Catalog number
LFS-03SU-Z	35 to 800 mL/min	3/8" Tri-Clamp	No	MK-24500-08
LFS-03SU-Z-G25			Yes	MK-24500-09
LFS-06SU-Z	1.7 to 8 L/min	3/8" Tri-Clamp	No	MK-24500-10
LFS-06SU-Z-G25			Yes	MK-24500-11
LFS-06SU-Z-SC1	0.08 to 8 L/min	3/8" Tri-Clamp	No	MK-24500-12
LFS-06SU-Z-SC1-G25			Yes	MK-24500-13
LFS-10SU-Z	4.7 to 20 L/min	1/2" Tri-Clamp	No	MK-24500-14
LFS-10SU-Z-G25			Yes	MK-24500-15
LFS-20SU-Z	18.8 to 80 L/min	1" Tri-Clamp	No	MK-24500-16
LFS-20SU-Z-G25			Yes	MK-24500-17

*Achieve ±1% accuracy at stated flow ranges.

Conveniently Packaged Bundles

Contents	Catalog number
Starter kit 24500-07 and one single-use flow sensor 24500-08	MK-24508-02
Starter kit 24500-07 and one single-use flow sensor 24500-12	MK-24508-00

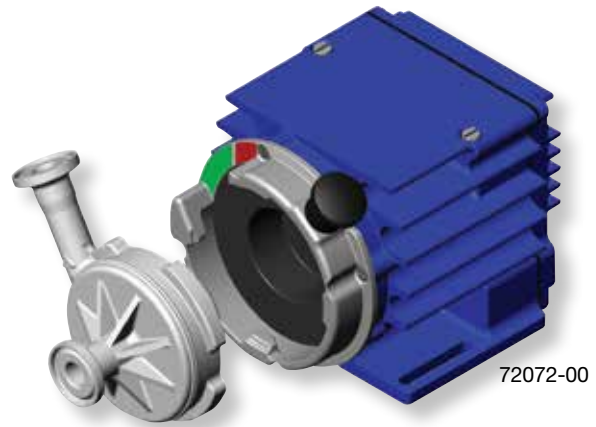
1-800-637-3739 | 1-847-381-7050
Masterflex.com

Levitronix® PuraLev® Single-Use Magnetic Drive Centrifugal Pumps

Safely handle sensitive biotech applications

- Single-use disposable pump head reduces risk of contamination
- Bayonet socket design makes exchanging pump heads quick and easy
- Absence of narrow gaps between impeller and pump casing eliminates bacteria buildup
- Low shear-force design is ideal for pumping shear-sensitive liquids and cells in biotech and pharmaceutical applications
- Impeller and housing are made from a biocompatible (FDA, USP Class VI, BSE/TSE, and animal free) polypropylene material that can be gamma irradiated
- No bearings to wear out or seals to break

Stand-alone systems 72072-00 and -04 include a drive with PLC interface for remote speed control and a single-use pump head. Four of the kits (72072-10, -12, -14, and -16) include the PuraLev touch-screen console which integrates the pumps with ultrasonic flow sensors; the console features an embedded PC with 7" multitouch screen and comes with software for flow control, configuration, and monitoring of various sensors. Advanced kits (72072-12 and -16) add on a LEVIFLOW clamp-on flow sensor.



72072-00



72072-04



Model	Max flow		Max head		Max pressure		Max temp		Connections		Power		Dimensions (L x W x H)		Touch-screen console (included)	Clamp-on sensor (included)	Catalog number
	GPM	LPM	ft	m	psi	bar	°F	°C	Hose barb	Tri-Clamp	VDC	Watts	in.	cm			
i100SU	4.5	17	65	19.8	29	2	140	60	—	½"	24	110	6¼ x 4¾ x 4½	15.8 x 10.6 x 11.4	—	—	MK-72072-00
															LCO-i100	—	MK-72072-10
															LCO-i100	LFSC-12D-007	MK-72072-12
i30SU	2	7.7	32	9.7	14.5	1	140	60	¾"	—	24	60	4¾ x 3 x 3¾	12.1 x 7.7 x 8.6	—	—	MK-72072-04
															LCO-i100	—	MK-72072-14
															LCO-i100	LFSC-08D-001	MK-72072-16

Accessories

MK-72072-08 Remote touch screen console (LCO-i100) for PuraLev single-use pump series

MK-72072-30 Replacement single-use pump head (i100SU); PP, ½" Tri-Clamp

MK-72072-32 Replacement single-use pump head (i100SU); PP, ½" Tri-Clamp, gamma irradiated

MK-72072-34 Replacement single-use pump head (i30SU); PP, ¾" barb

MK-72072-36 Replacement single-use pump head (i30SU); PP, ¾" barb, gamma irradiated



Remote touch-screen console 72072-08

Sanitary Barbed Clamp Adapters

Clamp x tubing ID	PP		PVDF	
	Qty/pk	Catalog number	Qty/pk	Catalog number
Mini Tri-Clamp x ⅛"	6	MK-31200-37	6	MK-31200-49
Mini Tri-Clamp x ⅜"	6	MK-31200-38	6	MK-31200-51
Mini Tri-Clamp x ¼"	6	MK-31200-39	6	MK-31200-52
Mini Tri-Clamp x ½"	6	MK-31200-41	6	MK-31200-53
Mini Tri-Clamp x ⅝"	6	MK-31200-42	6	MK-31200-54
Mini Tri-Clamp x ¾"	6	MK-31200-43	6	MK-31200-55



31200-41

1-800-637-3739 | 1-847-381-7050

Masterflex.com