

SGD 24-M-IP

Waterproof PanelPilot-Compatible Smart Graphics Display

FEATURES

- 2.4" colour TFT screen
- IP-67 and NEMA 6 rated
- Rugged and scratch resistant Corning® Gorilla® Glass window
- Supplied with free Windows design software, to setup and customise the display. Compatible with Windows XP, 2000, Vista and Windows 7
- Download meter applications from the ever expanding online library
- Programmable with the USB interface
- Simple and easy panel mounting solution
- IP-67 12-way connection
- Wide operating voltage of 4V – 30V d.c.
- 0 – 40V d.c. measurement range
- 2 analogue inputs
- 2 alarm outputs
- SPI and I²C

ORDERING INFORMATION

| | |
|---|-----------------|
| Standard Display (Panel meter, fixing kit, IP-67 connector, quick start guide) | SGD 24-M-IP |
| USB Cable (Type A to mini-B) | CABLE USB A-MF |
| 2m Rightangle cable with IP-67 connector | CABLE IP-12W-RA |



The SGD 24-M-IP is a PanelPilot Compatible IP-67 graphics display with a 320 x 240 pixel (QVGA) colour display and USB programming interface.

Using the PanelPilot software (available for Windows XP, 2000, Vista and Windows 7), users are able to choose from an ever-increasing number of configurations which can then be customised to their needs. The additional voltmeter types and other functions are available through www.PanelPilot.com.

Colours, text labels, splash screen and input voltage scaling can all be customised by the user through the software and then uploaded to the SGD 24-M-IP through the USB connection. When setup is complete, the settings can be saved and then uploaded to the meter using the supplied USB cable. Panel or enclosure installation of the finished module is simple, using the 32mm nut and the IP67 connector supplied with the unit.

| Specifications | Minimum | Typical | Maximum | Unit |
|--|---------|---------|------------|----------------|
| Accuracy | | 0.05 | 0.1 | % |
| Linearity | | | ±1* | Count |
| Sample rate | | 3 | | Samples/second |
| Operating temperature range | 0 (+32) | | +40 (+104) | °C (°F) |
| Supply voltage | 4 | | 30 | V d.c. |
| Measurement voltage (single ended only) ** | 0 | | 40 | V d.c. |
| Supply current *** | 35 | | 190 | mA |

* Depending on user calibration settings

** The SGD 24-M-IP uses a programmable gain amplifier. There are 8 different voltage ranges, to optimise the resolution. See page 2 for details.

*** Voltage dependent. See graph on Page 2.



www.lascarelectronics.com



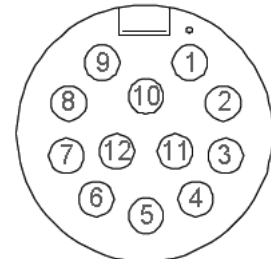
SGD 24-M-IP

Waterproof PanelPilot-Compatible Smart Graphics Display

IP67 CONNECTION

Connector Pin Functions

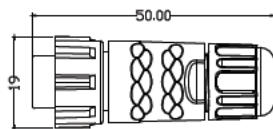
| | | |
|----|-----------|---|
| 1 | ESPI-CS2 | -SPI chip select |
| 2 | ESPI-MISO | - SPI master input, slave output |
| 3 | ESPI-CLK | - SPI serial clock |
| 4 | ESPI-MOSI | - SPI master output, slave input |
| 5 | SDA | - Serial data |
| 6 | SCL | - Serial clock |
| 7 | ALM2 | - Alarm output 2 |
| 8 | ALM1 | - Alarm output 1 |
| 9 | IN1 | - Analogue voltage input 1 (maximum of 40V d.c. w.r.t 0v) |
| 10 | IN2 | - Analogue voltage input 2 (maximum of 40V d.c. w.r.t 0v) |
| 11 | 0V | - 0V power supply input |
| 12 | V+ | - Positive power supply input (4V – 30V d.c.) |



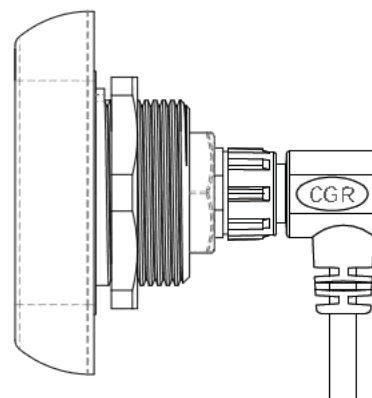
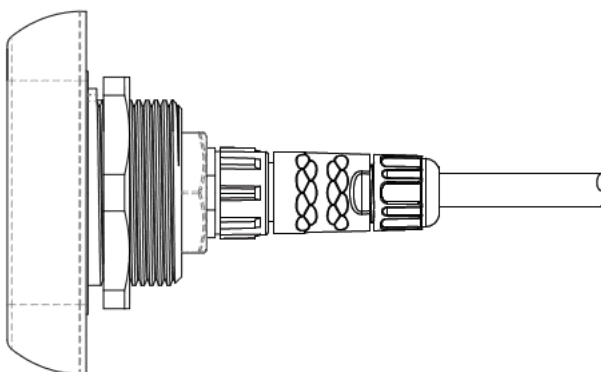
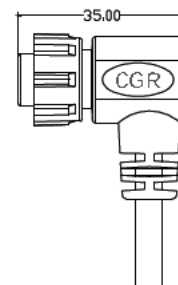
Front view

Connector plug options

Twist lock, field installable connector with solder bucket pins.
Seals for Cable OD=4.5mm~7.0mm



Twist lock connector with right angle overmoulded strain relief.
Cable length 2m.



SGD 24-M-IP

Waterproof PanelPilot-Compatible Smart Graphics Display

VOLTAGE INPUT

The SGD 24-M-IP features 2 voltage inputs, which use a Programmable Gain Amplifier (PGA) to make the best use of available resolution (the smallest voltage range offers the highest resolution). Each channel can be programmed independently, with the option of eight different input voltage ranges:

| Voltage Range (V) | Resolution (mV) |
|-------------------|-----------------|
| 0 - 1.25 | 0.3 |
| 0 - 2.5 | 0.6 |
| 0 - 4 | 1.0 |
| 0 - 5 | 1.2 |
| 0 - 8 | 2.0 |
| 0 - 10 | 2.4 |
| 0 - 20 | 4.9 |
| 0 - 40 | 9.8 |

The input voltage range is decided using the two voltages that the user enters in the scaling section of the Panel Pilot software. The software uses the smallest range available, which can accommodate both of the voltages entered by the user. The absolute maximum voltage input is 40V d.c.

For example:

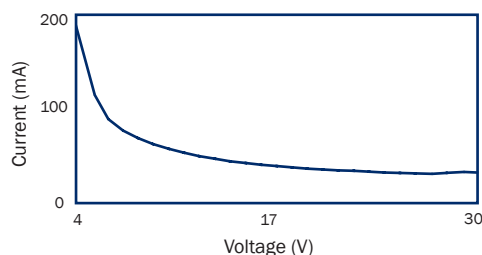
Entering a voltage scale of 0 – 30V in the software will use the 0 – 40V range.

Entering a voltage scale of 0 – 3V in the software will use the 0 – 4V range.

Entering a voltage scale of 5 – 15V in the software will use the 0 – 20V range.

Note: V+, IN1 and IN2 share a common ground (i.e. not floating or isolated from each other).

Typical Supply Current



USB Connection

A 'Type A to Mini-B' USB cable is required to program and customise the SGD 24-M-IP by unscrewing the 4xM3 screws and removing the back cover. The packing tray supplied can be used as a jig to hold the module and to avoid disconnecting the 12 way connector from the PCB inside.

The device will be powered for programming via USB.

It typically takes between 10 and 30 seconds to send a configuration, with an additional 5 seconds needed for the hardware to reset.

Display

The display is a 2.4" TFT panel, with a resolution of 320 x 240 pixels and a 16-bit colour depth. Any graphics that are uploaded to the meter are automatically converted to this specification.



www.lascarelectronics.com

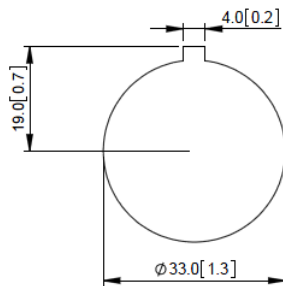


SGD 24-M-IP

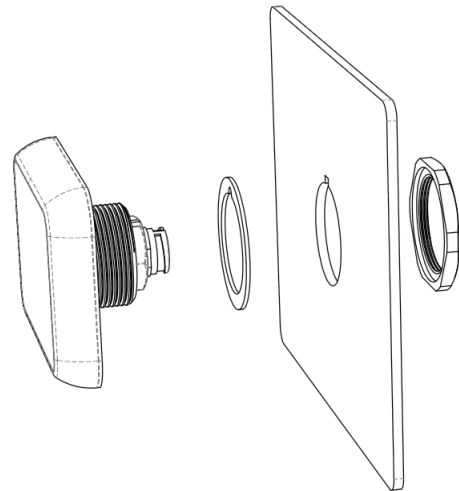
Waterproof PanelPilot-Compatible Smart Graphics Display

PANEL MOUNTING

The SGD 24-M-IP can be fitted into panels of up to 10.5mm deep. A rubber seal is included to seal the mounting hole when the 32mm nut is fully tightened. Panel mounting hole cut-out is DIA 33mm.

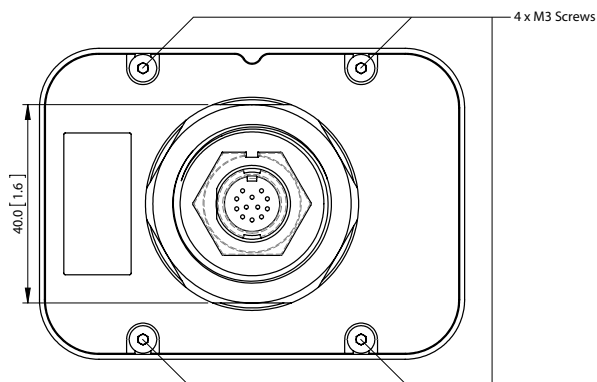
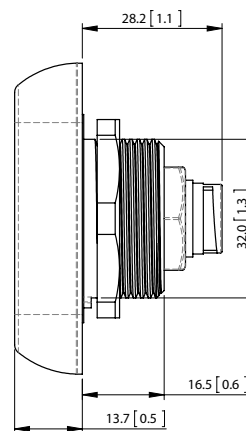
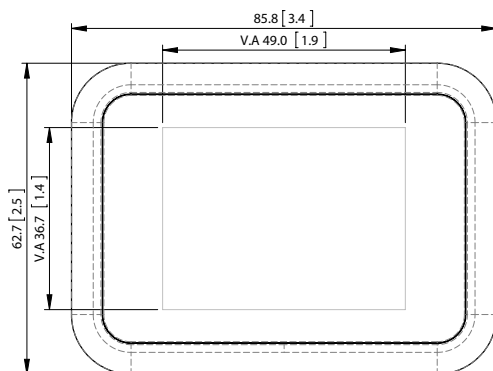


PANEL CUT OUT DIMENSIONS



DIMENSIONS

All dimensions in mm [inches]



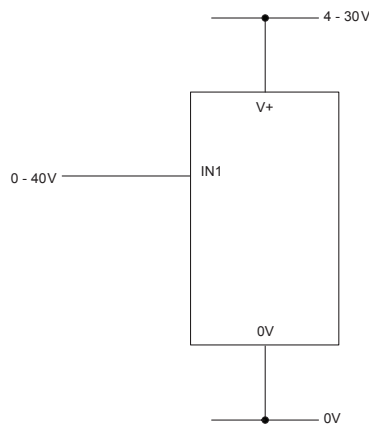
www.lascarelectronics.com



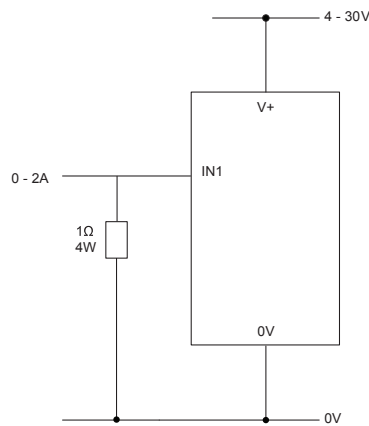
SGD 24-M-IP

Waterproof PanelPilot-Compatible Smart Graphics Display

VARIOUS OPERATING MODES

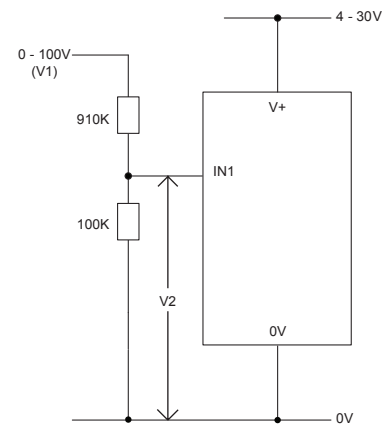


MEASURING A VOLTAGE SOURCE



MEASURING 0-2 AMPS CURRENT RANGE

Use a 1 Ω resistor, with a 4W rating.
Setup scaling in software: 0V = 0.00 and 2V = 2.00



MEASURING 0-100V (d.c. only)

Input a known voltage of between 0 and 100V (V1)
Measure the voltage between IN1 and 0V (V2)
Setup scaling in software: 0V = 0.0
V2 = V1 (Enter with the same number of decimal points, i.e 50.0)

PANELPILOT SOFTWARE

Lascar's PanelPilot software is available for download free of charge from www.PanelPilot.com. Easy to install and use, the control software runs under Windows 2000, XP (Home and Professional Editions), Vista and Windows 7. The software is used to setup the appearance and operation of the meter and then upload these settings to the meter.

Multiple types of voltmeter are supplied with the software. See lascarelectronics.com for details of available meters.

The software allows the following parameters to be configured:

- Meter type
- Text labels (including units and graph labels)
- Background, graph segment and text colors
- Input scaling / calibration (at two points)
- Decimal points (entered during scaling)
- Splashscreen image selection (to display a user image, such as a logo, when the meter is powered up)



Module House
Whiteparish, Salisbury
Wiltshire SP5 2SJ
UK
T +44 (1794) 884567
F +44 (1794) 884616
E sales@lascar.co.uk

4258 West 12th Street
Erie
PA 16505
USA
T +1 (814) 835 0621
F +1 (814) 838 8141
E us-sales@lascarelectronics.com

8th Floor, China Aerospace Centre
143 Hoi Bun Road
Kwun Tong, Kowloon
HONG KONG
T +852 2389 6502
F +852 2389 6535
E saleshk@lascar.com.hk



www.lascarelectronics.com

