

## IMPORTANT NOTICE TO PURCHASER: WARRANTY AND EXCLUSIVE REMEDIES

Thomas finished OEM products, when properly installed and under normal conditions of use, are warranted by Thomas to be free from defects in material and workmanship at time of shipment. Warranty claims regarding OEM limited products must be asserted within 18 months (the "warranty period") from date of manufacture encoded on the product (unless otherwise agreed in writing or specified in a Thomas OEM Quotation). The customer's exclusive remedy against Thomas for a warranty claim or otherwise, shall be limited to repair or replacement of the subject OEM finished product if it is shown to have been defective in material and workmanship at time of shipment, and then only if the claim is asserted during the warranty period. Thomas maximum liability under this exclusive remedy shall never exceed the cost of the subject product and Thomas reserves the right, at its sole discretion, to refund the purchase price in lieu of repair or replacement. Except for such warranty and exclusive remedy as stated (and except for the express warranty of title)

THOMAS DISCLAIMS ALL OTHER WARRANTIES WITH RESPECT TO ITS OEM FINISHED PRODUCTS, WHETHER IMPLIED, AND SPECIFICALLY DISCLAIMS THE IMPLIED WARRANTIES OF MERCHANTABILITY AND FITNESS FOR A PARTICULAR PURPOSE. IN NO EVENT SHALL THOMAS BE LIABLE TO CUSTOMER OR THIRD PARTIES IN WARRANTY, CONTRACT, NEGLIGENCE, STRICT LIABILITY, OR OTHERWISE, FOR ANY DAMAGES, WHETHER INCIDENTAL OR CONSEQUENTIAL, WHICH ARE ALLEGED TO HAVE BEEN CAUSED BY ONE OR MORE OF OUR PRODUCTS BEYOND THE COST TO THE CUSTOMER OF THE SUBJECT PRODUCT OR PRODUCTS. THE EXCLUSIVE REMEDY FOR ANY CLAIM HAVING BEEN LIMITED TO REPAIR OR REPLACEMENT AS AFORESAID.

Because Thomas OEM warranties and remedies extend only to our direct customers, the customer is not authorized to extend warranties on our behalf to anyone. Unauthorized extensions of warranties by the customer shall remain customer's responsibility.

CUSTOMER IS RESPONSIBLE FOR DETERMINING THE SUITABILITY OF OUR PRODUCTS FOR CUSTOMER'S USE OR RESALE, OR FOR INCORPORATING THEM INTO OBJECTS OR FOR APPLICATIONS WHICH CUSTOMER DESIGNS, ASSEMBLES, CONSTRUCTS OR MANUFACTURES.



An Ingersoll Rand Business

## SAFETY INSTRUCTIONS AND PARTS LIST FOR MODELS 107CA18TFEL-246 & 247 107CD18TFEL-246 & 247

**Read and understand the following information and instructions before using. This information is for your safety and to prevent damage to this product.**

### **CAUTION: To reduce risk of electrical shock ...**

1. Do not disassemble. Disassembly or attempted repairs if accomplished incorrectly can create electrical shock hazard. Refer servicing to qualified service agencies only.
2. If this product is supplied with a three pronged plug, connect unit to a properly grounded outlet only.

### **WARNING: To reduce risk of electrocution ...**

1. This product should never be left unattended when plugged in.
2. Always unplug this product immediately after using and store in a dry place.
3. Do not use this product in or near an area where it can fall or be pulled into water or other liquids.
4. Do not reach for this product if it has fallen into liquid. Unplug immediately.
5. Never operate this product outdoors in the rain or in a wet area.

### **DANGER: To reduce risk of explosion or fire ...**

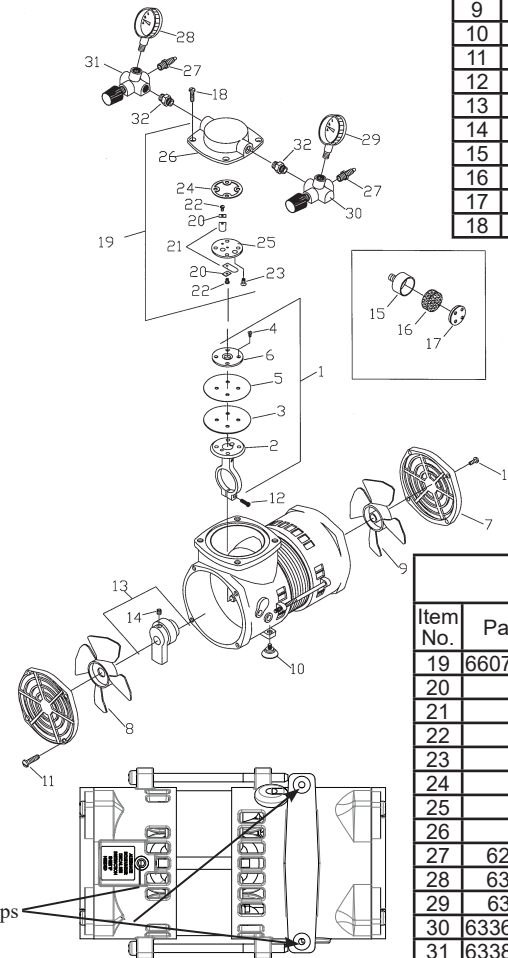
1. Do not use this product in or near explosive atmospheres or where aerosol (spray) products are being used.
2. Do not pump anything other than atmospheric air.
3. Do not pump combustible liquids or vapors with this product or use in or near an area where flammable or explosive liquids or vapors may exist.
4. Do not use this product near flames.

## SAVE THESE INSTRUCTIONS

**⚠ CAUTION: To prevent Injury ...**

1. Close supervision is necessary when this product is used near children or invalids. Never allow children to operate unit.
2. Never operate this product if it has a damaged cord or plug, if it is not working properly, if it has been dropped or damaged or if it has fallen into water. Return the product to a service center for examination and repair.
3. Keep the cord away from heated surfaces.
4. Never block any air openings (inlet) of this product or place it on a soft surface where the openings may be blocked. Keep all air openings free of lint, dirt and other foreign objects.
5. Never use while sleeping or drowsy.
6. Never drop or insert fingers or any other object into openings.
7. Do not operate this product where oxygen is being administered.
8. This unit may be thermally protected and can automatically restart when the protector resets. Always disconnect power source before servicing.
9. Wear safety glasses or goggles when operating this product.
10. Use only in well ventilated areas.
11. Do not use any tools or attachments without first determining maximum air pressure for that tool or attachment.
12. Never point any air nozzle or air sprayer toward another person or any part of the body.
13. All electrical products generate heat. To avoid serious burns never touch unit during or immediately after operation.

**Exploded View and Parts List**



107CA18TFEL-246 107CD18TFEL-246				
Item No.	Part No.	Component Part	Description	Qty
1	607181		Connecting Rod Assy	1
2		607139	Connecting Rod	1
3		608147	Diaphragm	1
4		625540	Screw - Hold Down Plate	4
5		646117	Diaphragm Liner	1
6	654651		Hold Down Plate	1
7	614609		Front Cover	1
8	633545		Fan - Gray	1
9	633544		Fan - White	1
10	624266		Suction Cup Feet	3
11	625660		Screw - Front Cover	8
12	625114		Screw - Connecting Rod	1
13	645373		Eccentric & Bearing Assy	1
14		625244	Set Screw - Eccentric	1
15	660763		Filter Body	1
16	641034		Foam Filter	1
17	660767		Filter Cap	1
18	625444		Screw - Head	4

Note\* Models 107CA18TFEL-247 and 107CD18TFEL-247 use items 15 through 17 in place of items 27 through 32.

107CA18TFEL-246 107CD18TFEL-246				
Item No.	Part No.	Component Part	Description	Qty
19	660795-504		Head & Vlv Plate Assy	1
20		617045	Valve Keeper Strip	2
21		621102	Valve Flapper	2
22		625160	Screw - Valve Flapper	2
23		625606	Screw - Valve Plate	4
24		633439	Gasket - Valve Plate	1
25		654356	Valve Plate	1
26		660248-504	Head	1
27	624663		Hose Fitting	2
28	633210		Gauge - Vacuum	1
29	633211		Gauge - Pressure	1
30	633682-504		Control Vlv Assy Press.	1
31	633896-504		Control Vlv Assy Vac	1
32	624514		Connector Pipe	2

**⚠ Warning: Thomas compressors and vacuum pumps are precision-made, carefully assembled and wired. Do not disassemble or attempt to repair these products. Repair service should be performed by qualified personnel only.**

**⚠ Failure to observe the safety precautions above could result in severe bodily injury, including death in extreme cases.**