

Rocker 35 EZ

User Manual



S2035-E
S2035-E-230V
S2035-DE
S2035-DE-230V



Labnet
Labnet International, Inc.

TABLE OF CONTENTS	Page
1.0. GENERAL DESCRIPTION	3
1.1. DEFINITION	3
1.2. PRINCIPLE OF OPERATION.....	3
2.0. TECHNICAL FEATURES.....	3
2.1. CONSTRUCTION.....	3
2.2. GENERAL FEATURES	3
3.0. INSTALLATION.....	4
3.1. UNPACKING	4
3.2. SELECTING THE RIGHT PLACE	4
3.3. ATTACHING THE POWER CORD.....	4
3.4. ENVIRONMENT CONDITIONS.....	5
4.0. INSTRUCTIONS FOR USE	5
4.1. INTRODUCTION	5
4.2. OPERATION.....	5
4.3. ADJUSTING TILT ANGLE	6
5.0. SAFETY	7
6.0. TROUBLESHOOTING GUIDE	7
7.0. REGULAR MAINTENANCE.....	8
7.1. CLEANING	8
8.0. INSTALLATION OF DOUBLE PLATFORM.....	9

1.0. GENERAL DESCRIPTION

1.1. DESCRIPTION

Rocker 35 EZ is a general purpose adjustable tilt rocker with digital time and speed controls. The tilt angle is easily adjustable without tools using the knob on right side of unit. This reliable rugged unit is designed for extended use and comes with a 5 year warranty.

1.2. PRINCIPLE OF OPERATION

The motor is designed to generate a rocking effect while the electronic interface controls the RPM and Time features.

2.0. TECHNICAL FEATURES

2.1. CONSTRUCTION

The housing of the rocker is made of plastic and steel plate varnished with high resistant polyurethane lacquer.

2.2. GENERAL FEATURES

ELECTRIC POWER SUPPLY	230V \pm 10%, 50/60Hz or 115V \pm 10%, 50/60Hz
MOTOR POWER	6 W
FUSES	2 x 1AT (for 230V and 115V power supply)
RPM REGULATION	Microcontroller, load independent, from 10 to 120 RPM
TILT ANGLE	0 - 20° from horizontal
TIMER	10 - 120 min, HOLD function
LOAD	Max. 5 kg
DIMENSIONS W x D x H	360 x 360 x 170 mm (single platform) 360 x 360 x 260 mm (double platform)
PLATFORM DIMENSIONS W X D	360 x 280 mm
WEIGHT	6.5 kg (single platform), 7.8 kg (double platform)
AMBIENT CONDITIONS	-10°C to 70°C, up to 85% RH, non-condensing

3.0. INSTALLATION

3.1. UNPACKING

Before starting the installation, carefully examine the delivery for possible damage or missing parts.

- Open the box and lift the device together with shock absorbers out of the box.
- Remove the shock absorbers and check that the rocker has not been visibly damaged during the transportation. Keep the packing material until you are sure that the rocker works properly.
- Check information on rocker name plate:
 - Type
 - Serial Number
 - Product number
- Check that the mains cord has a pin configuration that will fit into a wall socket according to the local standard.

Should any kind of damage have occurred during transportation, immediately make a complaint to the carrier. Any incorrect delivery or missing parts should be reported to the distributor.

3.2. SELECTING THE RIGHT PLACE

When selecting the right place for device, please consider following:

- Put the device on smooth, horizontal and stable place.
- Leave enough space beyond the device for normal air circulation, min. 10 cm.
- Leave enough space around the device, that you will easy control and maintain it.
- Don't use the device in surroundings, where there are fast temperature and humidity changes. Please avoid also such places, which are under direct access of sun light or places nearby devices which producing heat.
- Avoid such places, where possibility of shocks and vibrations exists.

NOTE: The equipment shall not be placed so, that it is difficult to pull out a mains cord plug from wall socket.

3.3. ATTACHING THE POWER CORD

Fit the mains cord, which is included in the delivery, into the mains receptacle on the back side of rocker. Connect the other end of the cord to a grounded wall socket. To avoid interference from noise, surges and spikes, a special line is preferred. If no such line is available, avoid lines to which powerful electric motors, refrigerators and similar devices are connected.

The power can be turned on and off by main switch located on the front panel of the device. Light, mounted in the switch indicates that power is on.



Take care when you plug mains cord to a grounded wall socket. Do not touch the plug with wet hands, because it can be very dangerous. Plug mains cord to a grounded wall socket only with dry hands.

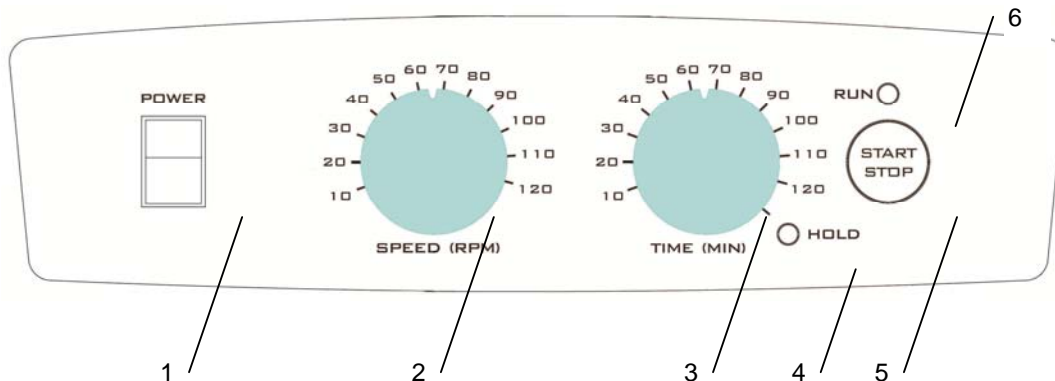
3.4. ENVIRONMENT CONDITIONS

The rocker has been built for operating in laboratory environment. Therefore the environmental reference parameters are the following:

- Temperature between -10°C to +70°C
- Humidity up to 85% RH, non-condensing

4.0. INSTRUCTIONS FOR USE

4.1. INTRODUCTION



1. POWER switch - to turn the rocker ON (power switch illuminates) or OFF.
2. SPEED knob - to set the rocker speed.
3. TIME knob - to set the time of operation.
4. HOLD yellow signal light - illuminates when the rocker is set to HOLD (continuous operation).
5. START/STOP key - to START or STOP the rocking operation.
6. RUN green signal light - illuminates when the rocker is running.

4.2. OPERATION

1. Turn POWER switch ON (it should illuminate).
2. Set SPEED knob to desired value.
3. Set TIME knob to desired value or to HOLD - continuous operation (yellow signal light HOLD must illuminate).
4. Press START/STOP key to start the rocking operation.
5. Device automatically stops after the set time passes.
6. If you want to stop the rocking operation before the set time passes, or when TIME knob is set to HOLD, press START/STOP key.

NOTE: Pressing START/STOP key during operation will reset the timer.

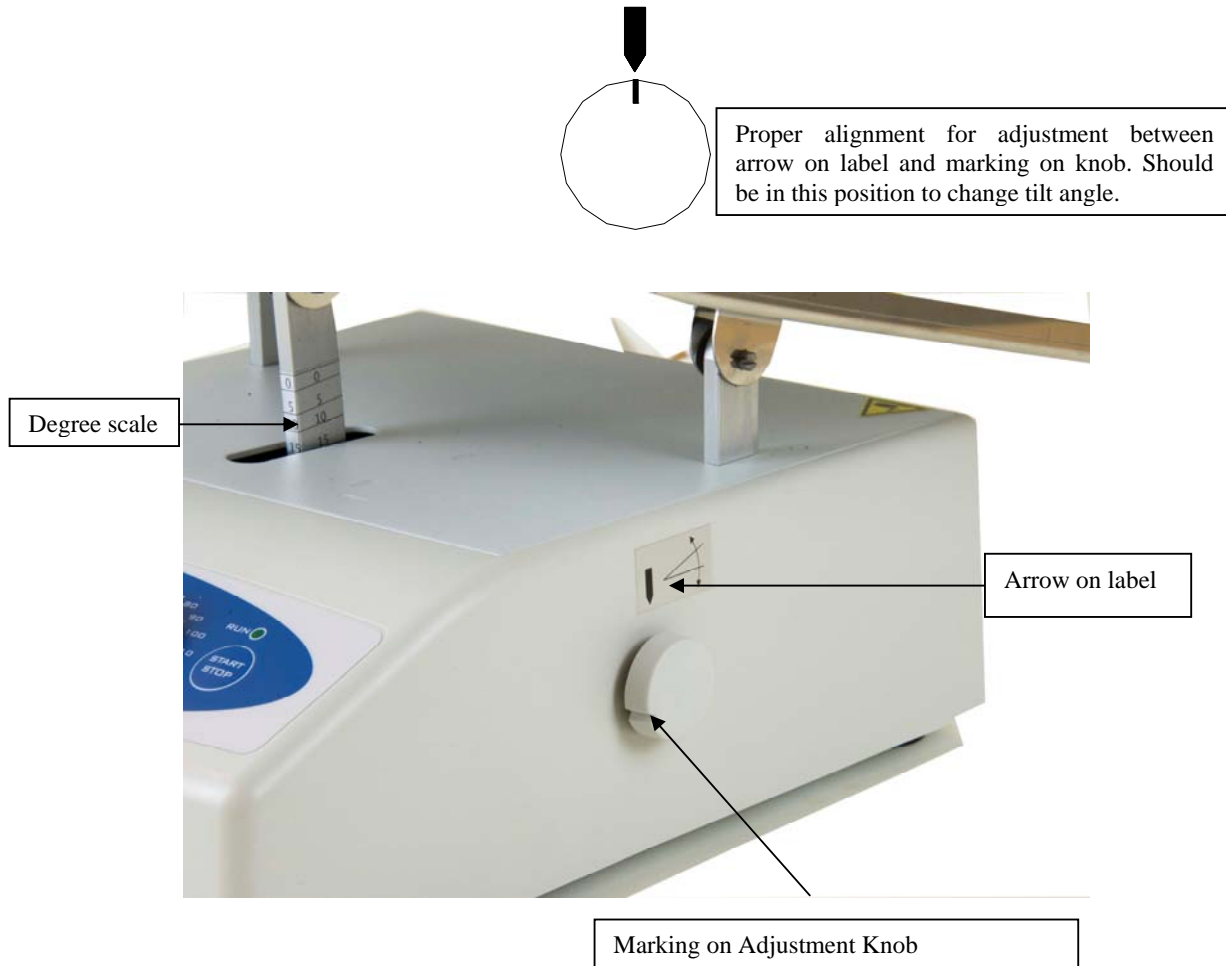
It's possible to change speed during operation, but you cannot change time. If you want to change time, stop the rocker, set desired time and start it again.



Do not put your hands between platform and housing during operation, because your fingers can get pinched.

4.3. ADJUSTING TILT ANGLE

NOTE: Before you adjust the tilt angle, rocker must be **STOPPED**. Stop the rocker in a position, where marking on the knob, located on the right side of the housing, is aligned with arrow on the label (see picture below). Do this by operating the rocker at low speed (20 - 30 RPM). Only when marking and arrow are aligned, then it's easy to adjust tilt angle of rocker platform.



How to adjust tilt angle:

1. Stop the rocker in a position described above and unload the platform.
2. Loosen the knob on the right side of the rocker housing, by rotating it counter-clockwise.
3. Adjust the platform to desired tilt angle by moving it up or down and looking on the degree scale (see above) on the platform drive shaft (front center under platform).
4. Tighten the knob on the right side by turning it clockwise. Test the unit without load to ensure platform is tight.

Now rocker is ready for operation with new desired tilt angle.

5.0. SAFETY

- Do not use the device nearby water sources. Take care, that water will not drop in the device, especially by cleaning procedures.
- Do not use the device in aggressive atmosphere.
- To avoid shock hazards or destroying the device, do not put any electrical conducting objects into the device. It could happen that you would touch dangerous voltage points.

In case of malfunction, unplug the device from mains power supply and call authorized service. You have to call the service in the following cases also:

- Mains cord or mains receptacle are harmed or destroyed.
- Liquid was dropped into the device.

NOTE: In case that device is not functioning properly, even if you have exactly followed instructions described in User's Manual, you are allowed to use only those commands and procedures, which are described by User's Manual. Use of any other commands, procedures and adjustments could result in device destruction or longer service repair time.

If the equipment is used in a manner not specified by the manufacturer, the protection provided by the equipment may be impaired.



Do not shake inflammable or explosive samples!

6.0. TROUBLESHOOTING GUIDE

Review the information in the table below to troubleshoot operating problems. In case of malfunction, unplug the device from main power supply and contact Labnet International, Inc. Service Department at (732) 417-0700 Monday through Friday 8:30am – 5pm EST.

Problem	Explanation / Solution
POWER switch doesn't illuminate when turned ON.	Check the connection to main power supply. Check fuses. Call authorized service.
Rocker doesn't start when you press START/STOP key.	Check the connection to main power supply. Check fuses. Call authorized service.
HOLD yellow signal light and RUN green signal light are blinking.	Motor overload - reduce the load on the platform. Call authorized service.

7.0. REGULAR MAINTENANCE

- No routine maintenance or lubrication is required.
- It is recommended that the rocker is kept clean to ensure long trouble-free operation.

7.1. CLEANING

The housing of the rocker can be cleaned with a soft, damp cloth or special cleaners for plastic surfaces (e.g. for car interior - armature). Do not immerse the device or spill liquids on the device.

NOTE: Do not use any aggressive or abrasive cleaners (acetone, nitro, polish etc.) because the surface can get permanently damaged.



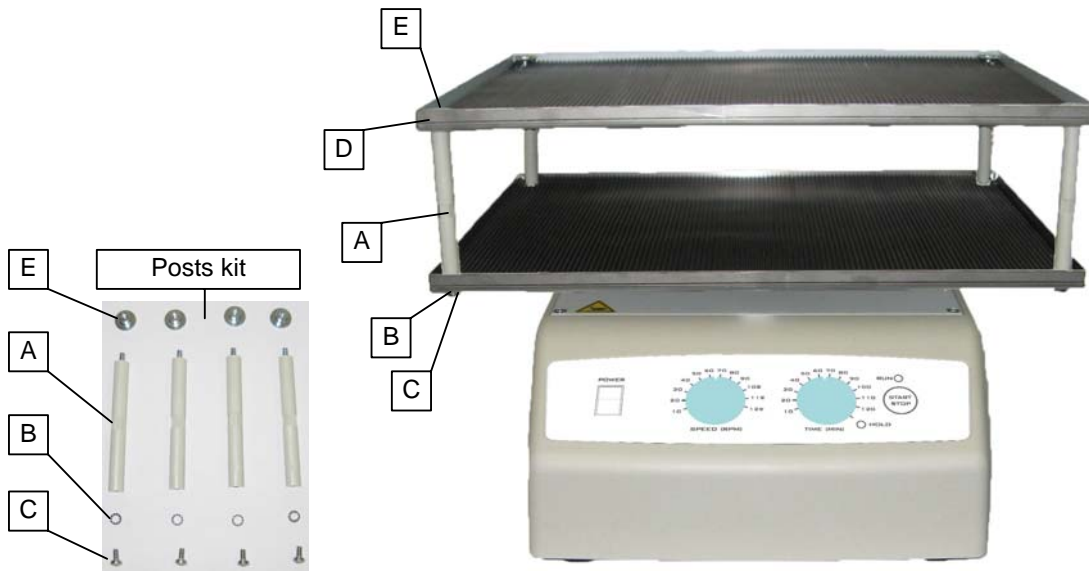
Prior to any cleaning or maintenance of the device, unplug the power cord from the wall socket.

8.0. INSTALLATION OF DOUBLE PLATFORM

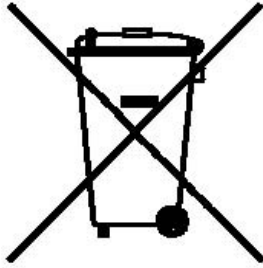


Before the installation of double platform, turn off the POWER switch.

For installation of double platform, prepare upper platform with rubber pad and posts kit, which includes four posts, four washers, four screws and four nuts.



1. Set four posts (A) above four holes at the corners of the bottom platform.
2. Put the washer (B) on each screw (C) and then screw it into each post from the bottom side of the platform.
3. Fit upper platform (D) on the top of four posts, so that the threads of the posts are protruding through four corner holes.
4. Screw four nuts (E) on the threads of four posts, to fix the upper platform.



This equipment is marked with the crossed out wheeled bin symbol to indicate that this equipment must not be disposed of with unsorted waste.

Instead it's your responsibility to correctly dispose of your equipment at lifecycle-end by handing it over to an authorized facility for separate collection and recycling. It's also your responsibility to decontaminate the equipment in case of biological, chemical and/or radiological contamination, so as to protect from health hazards the persons involved in the disposal and recycling of the equipment.

For more information about where you can drop off your waste equipment, please contact your local dealer from whom you originally purchased this equipment.

By doing so, you will help to conserve natural and environmental resources and you will ensure that your equipment is recycled in a manner that protects human health.

Thank you

LIMITED WARRANTY

Labnet International, Inc. warrants that this product will be free from defects in material and workmanship for a period of one (1) year from date of purchase. This warranty is valid only if the product is used for its intended purpose and within the guidelines specified in the supplied instruction manual.

Should this product require service, contact Labnet International, Inc.'s Service department at 732-417-0700 to receive a return authorization number and shipping instructions. Products received without proper authorization will be returned. All items returned for service should be sent postage prepaid in the original packaging or other suitable carton, padded to avoid damage. Labnet International, Inc. will not be responsible for damage incurred by improper packaging. Labnet International, Inc. may elect for onsite service for larger equipment.

This warranty does not cover damage caused by accident, neglect, misuse, improper service, natural forces or other causes not arising from defects in original material or workmanship. This warranty does not cover motor brushes, fuses, light bulbs, batteries or damage to paint or finish. Claims for transit damage should be filed with the transportation carrier.

ALL WARRANTIES INCLUDING THE IMPLIED WARRANTY OF MERCHANTABILITY AND FITNESS FOR A PARTICULAR PURPOSE ARE LIMITED IN DURATION OF 12 MONTHS FROM THE ORIGINAL DATE OF PURCHASE.

LABNET INTERNATIONAL, INC.'S SOLE OBLIGATION UNDER THIS WARRANTY IS LIMITED TO THE REPAIR OR REPLACEMENT, AT LABNET INTERNATIONAL, INC. DISCRETION, OF A DEFECTIVE PRODUCT. LABNET INTERNATIONAL, INC. IS NOT LIABLE FOR INCIDENTAL OR CONSEQUENTIAL DAMAGE, COMMERCIAL LOSS OR ANY OTHER DAMAGES RESULTING FROM THE USE OF THIS PRODUCT.

Some states do not allow limitation on the length of implied warranties or the exclusion or limitation of incidental or consequential damages. This warranty gives you specific legal rights. You may have other rights which vary from state to state.

No individual may accept for, or on behalf of Labnet International, Inc., any other obligation of liability, or extend the period of this warranty.

Mail Warranty Registration to :

or

Register online at

**Labnet International, Inc.
31 Mayfield Ave. Edison, NJ 08837**

www.labnetinternational.com

✂ cut along the dotted line

To validate the warranty, complete and return this card within 10 days.

Model _____
Serial No. _____ Date Tested _____
Date Rec'd _____ PO# _____
Name/Title _____
Phone _____
Institution _____
Address _____
City _____ State _____ Zip/Postal Code _____ Country _____
Purchased from (distributor) _____
How would you rate the quality of this product? Excellent Good Fair Poor
What feature(s) on this product made you purchase it? _____
What feature(s) would you change to improve the performance of this product? _____

Labnet
Labnet International, Inc.

31 Mayfield Avenue. Edison, NJ 08837
(p) 732.417.0700 (f) 732.417.1750

Labnet 
Labnet International, Inc.