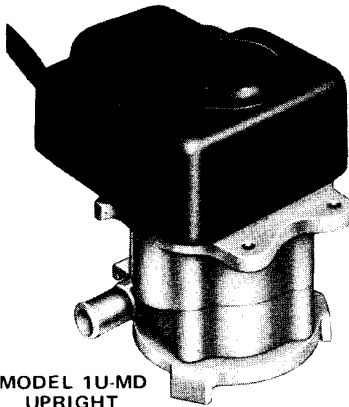
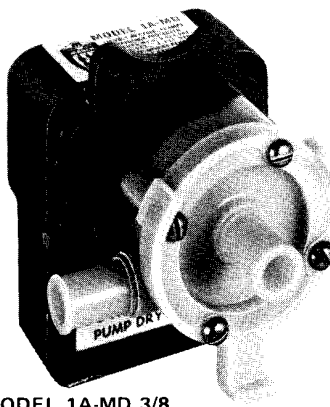


# MARCH

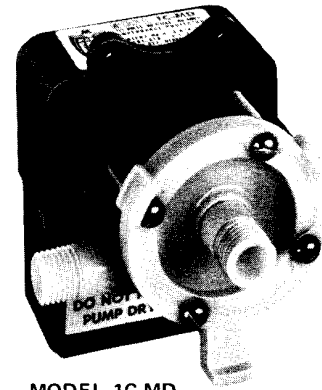
## INSTRUCTIONS & REPAIR PARTS FOR MODELS 1U-MD, 1A-MD, 1C-MD



MODEL 1U-MD  
UPRIGHT  
ASS'Y. NO. 115-007-04



MODEL 1A-MD 3/8  
ASS'Y. NO. 115-007-01



MODEL 1C-MD  
ASS'Y. NO. 115-007-03

### PUMP CONSTRUCTION AND SERVICING

March "Orbital" Magnetic Drive Pumps eliminate the conventional shaft seals found in most pumps. This means that there is no rotating seal to wear and allow the liquid being pumped to leak out. In addition to this unique "seal-less" design, the pump is hermetically encapsulated in epoxy. This epoxy encapsulation now allows the pumps to be run fully submerged in many liquids. The models 1U-MD, 1A-MD, and 1C-MD pumps can be run totally submerged or can be run in open air for complete moisture protection.

All these pumps can be serviced with the use of a screwdriver. The only moving parts in the pump other than the motor, is the Impeller-Magnet Assembly. This Impeller-Magnet Assembly rotates on a stationary spindle and up against a thrust washer. This is the only part that can wear out, and may need to be replaced. See the Repair Parts List for replacement parts if necessary.

U.L. recognition on pumps is for water only. For pumping liquids other than water contact factory.

### ELECTRICAL CONNECTIONS AND RUNNING DRY

All models are standard in 115 volt, 60 cycle, 1 phase A.C. All cord sets are U.L. listed 18/3 wire SJT plastic cords with ground type molded plugs. Standard cord length is 6 feet. Twelve foot lengths or longer are available. The motors are C.S.A. approved under File No. 40072. The pumps are U.L. recognized under the U.L. component program.

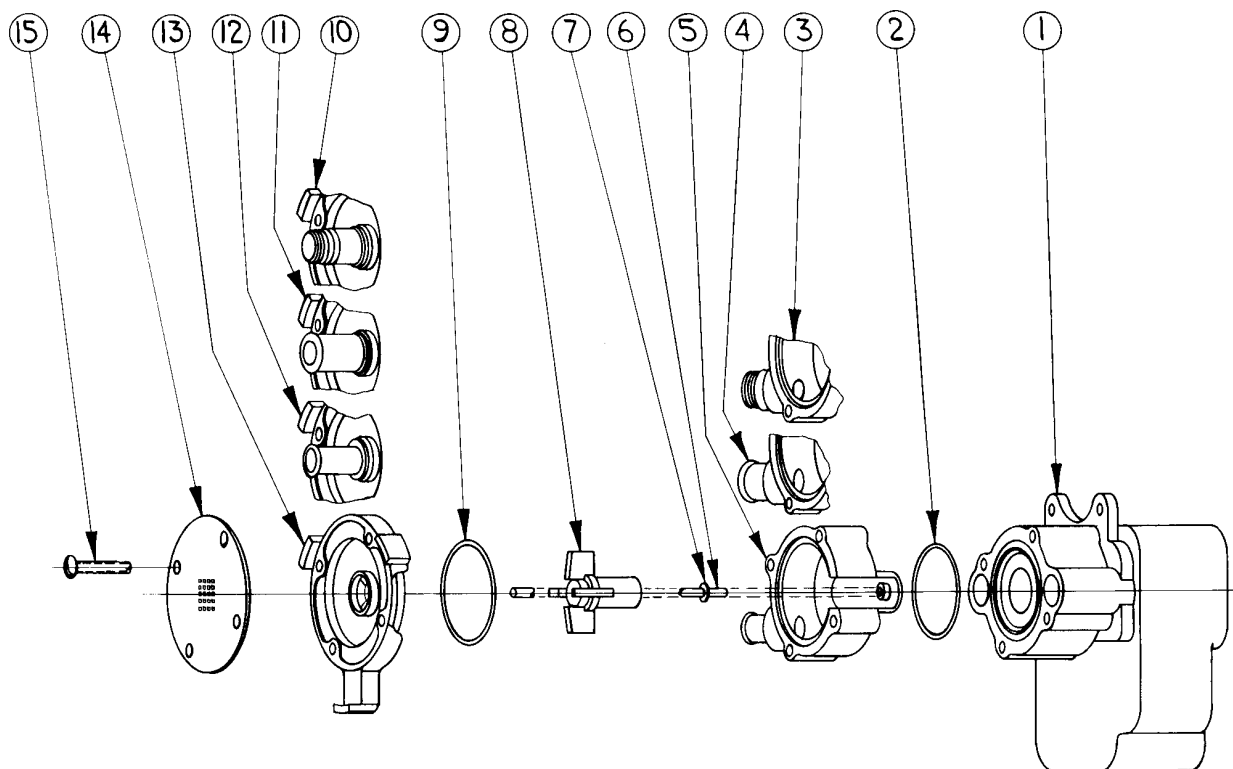
We rely on the liquid being pumped to lubricate the Impeller-Magnet Assembly spinning on the stationary spindle. If the pump is run dry for longer than 30 minutes the plastic may "freeze" onto the spindle.

### PUMP MATERIALS

All Screws are type 18-8 stainless steel.  
All "O" Ring Gaskets are Buna N Rubber.  
The Stationary Spindle is type 316 stainless steel.  
Motor Bracket is Glass Filled Noryl.  
Pump Housing & Cover is Cyclocac or Polypropylene.  
Impeller Assembly is Nylon and Ceramic.  
Thrust Washer is Teflon.  
For other materials available contact the factory.

### RATINGS AND SPECIFICATIONS

MODEL NO.	CONNECTORS		H.P.	ELECTRICAL		G.P.H. AT LISTED HEAD				MAX. HEAD	P.S.I. GAGE	DIMENSIONS			PACK WT.
	Inlet	Outlet		Watts	Amps	1 Ft.	3 Ft.	4 Ft.	6 Ft.			Ht.	Wd.	Lg.	
1U-MD	OPEN	1/4 MPT	1/200	19	.4	150	100	36	0	4.6 Ft.	2.0	3-5/8	3	3-5/8	2.5 lbs.
1C-MD	1/4 MPT	1/4 MPT													
1A-MD	1/2 O.D.	1/2 O.D.													
1A-MD	3/8 O.D.	3/8 O.D.	1/200	19	.4	100	55	30	0	4.6 Ft.	2.0	3-5/8	3	3-5/8	2.5 lbs.



### MODELS 1-MD REPAIR PARTS LIST

ITEM	PART NUMBER	DESCRIPTION	QTY. REQ'D.
1	115-006-01	Motor, Bracket, Cord, Drive Mag. Assembly	1
2	115-017-10	Bracket "O" Ring, Buna "N" Rubber	1
3	115-057-10	Housing with 1/4-18 Th'd. Outlet Port (Polypro)	1
4	115-059-10	Housing with 1/2 inch O.D. Outlet Port (Polypro)	1
5	115-074-10	Housing with 3/8 inch O.D. Outlet Port (Polypro)	1
6	115-032-10	Impeller Shaft (316 Stainless)	1
7	115-033-10	Rear Thrust Washer (Teflon)	1
8	115-008-01	Impeller and Magnet Assembly (Nylon)	1
9	115-018-10	Housing "O" Ring, Buna "N" Rubber	1
10	115-058-10	Cover with 1/4-18 Th'd. Inlet Port (Polypro)	1
11	115-060-10	Cover with 1/2 inch O.D. Inlet Port (Polypro)	1
12	115-075-10	Cover with 3/8 inch O.D. Inlet Port (Polypro)	1
13	115-016-10	Cover (Cyclocac-ABS)	1
14	115-012-10	Inlet Screen (Polypropylene)	1
15	115-062-10	Screws, Self-Tapping	4

PRICES SUBJECT TO CHANGE WITHOUT NOTICE

### LIMITED WARRANTY

This pump is guaranteed against defective workmanship or material for a period of one year from date of manufacture. Warranty may be extended up to one year from date of purchase if the enclosed warranty card is filled out completely and returned at date of installation. All pumps not warranty registered at March will be limited to one year from date of manufacture. Warranty void if pump is connected to wrong voltage or if otherwise abused. All pumps must be shipped to March, freight prepaid. Warranty pumps will be either repaired or replaced at our option.

**MARCH MANUFACTURING, INC.**

1819 PICKWICK AVE., GLENVIEW, ILLINOIS 60025-5793, U.S.A.  
 PHONE: (847) 729-5300 • FAX: (847) 729-7062