

04369-10 04369-25

04369-15

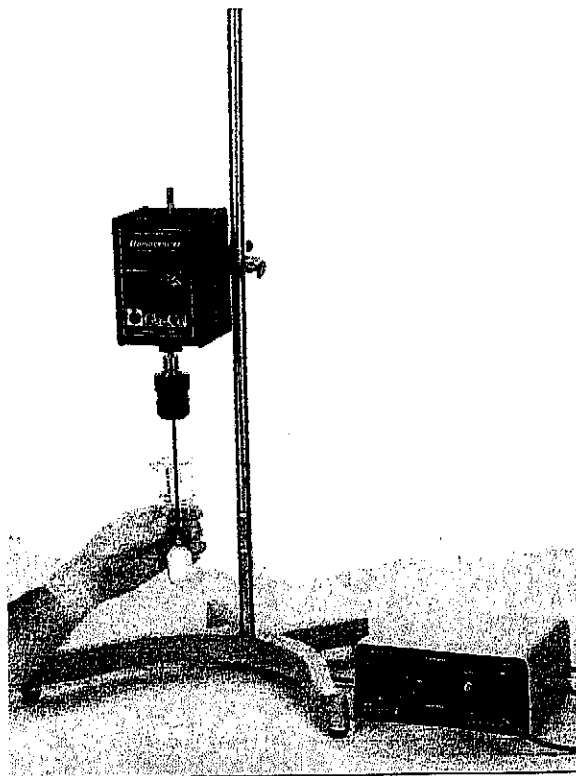
user instructions



711 HULMAN STREET
PO BOX 2128
TERRE HAUTE, IN 47802
812-235-6167
FAX 812-234-6975

Glas-Col Homogenizer System Variable Speed

Model: 099C K54, 2.5 amps, 120 volts, 50/60 Hz.
099C K5424, 2.5 amps, 240 volts, 50/60 Hz.



RECEIVED
COLE-PARMER
INSTRUMENT & EQUIP. CO

AUG 01 2000

Locate and identify parts shipped:

- Motor
- Control
- Chuck/Arbor assembly
- Lab mounting bracket
- Allen wrench

Specifications:

Power:	K54	120 vac +/- 10%
	K5424	220 to 240 vac +/-10%
Ambient Temperature:		50 to 60Hz. +/- 5%
		77°F/25°C +/-5°C
Operating Environment:		0 to 90% relative humidity
		32 to 100°F/0 to 37°C

Operation:

Connect the motor cord to the control. This plug is polarized so that it can only be plugged in one way. Make sure the forward/reverse switch is in the center OFF position and the motor speed knob is fully counter clockwise and snapped to the off position. Plug the control power cord into a properly grounded and polarized receptacle. Select the desired direction with the forward/reverse switch. Turn the motor speed knob clockwise to turn on and set the motor speed.

The motor is a totally enclosed permanent magnet motor with 5/16" diameter shafts on each end. The high speed shaft is rated to 4000 rpm (.26lb-in. torque); low speed shaft rated to 333 rpm (3.6 lb-in. torque).

Control Features:

1. **SPEED POSITION KNOB:** This allows adjustable speed of the K Series drive; power on switch.
2. **FORWARD/REVERSE SWITCH:** For direction of motor.
3. **FUSE:** The stirrer circuit is protected against overloads with a 2-1/2 amp fuse.
4. **OUTPUT SOCKET:** Socket for connection for motor to control.

Always use proper safety equipment when stirring, for example, gloves, glasses, etc. Read and follow instructions that are supplied with your stirrer drive.

When reversing the motor direction, let the motor stop before changing direction.

Your homogenizer may be used as a general purpose stirrer. As a general rule, use the slower speeds whenever possible for the work to be done. Limit your use of the highspeed shaft to small propellers and low viscosity fluids. Large paddles will overload the motor, even running in water, if you use it at maximum speed on the high speed shaft.

Caution:

The fuse is rated at 2.5 amps; it won't necessarily protect the motor or the controller against prolonged, moderate overloads. **Do not fuse with anything heavier than 2.5 amps.**

Use of a homogenizer for an alternate purpose or alteration of homogenizer construction features such as electrical connecting devices, may cause unsatisfactory performance and the warranty to be voided.

Your homogenizer drive requires very little maintenance. Keep it clean and avoid spills. Inspect the motor brushed occasionally (with the power cord disconnected) to make sure they have not worn excessively. Do not use if electrical cords are worn or frayed.

Spare Parts

Spare parts for Glas-Col homogenizers are generally available from the factory. Consult Glas-Col for part numbers and pricing.

Limited Warranty:

Glas-Col warrants products of its manufacture to be free from defects in material and workmanship and agrees to repair or replace without charge any products found defective upon examination at the factory. With proper care and operation, Glas-Col products will give long and efficient service. Chemical spillage, overheating, overloading and general misuse will greatly reduce the service life. Glas-Col is not responsible for damage to apparatus due to improper installation or through attempts to operate the apparatus beyond its rated capacity, intentional or otherwise. Normally expendable parts are not covered by this warranty.

In the event of an incident due to a defective replacement component, Glas-Col will accept responsibility only if the component was defective from the outset. Glas-Col reserves the right to deny responsibility for the incident if the user fails to comply with any instructions provided by using spare parts which are not guaranteed.

APART FROM SUCH WRITTEN STATEMENT OF WARRANTY, THERE ARE NO WARRANTIES, EXPRESSED, IMPLIED OR STATUTORY WHICH EXTEND BEYOND THE DESCRIPTION OF THE PRODUCTS ON THE FACE HEREOF.

Glas-Col products are intended only for legal and legitimate purposes in commercial, laboratory and industrial settings.

Glas-Col reserves the right to make product refinements without prior notice.

Returns:

Call or fax Customer Service for a Return Goods Authorization (RGA) number before returning a heating mantle.

Reference the RGA number on the shipping box and on a written description of the problem.

A 15% restock charge of the net price is charged for all standard product returned to stock.

Glas-Col

711 Hulman Street., P.O. Box 2128, Terre Haute, IN 47802-0128

Phone. (812) 235-6167, Fax. (812)234-6975