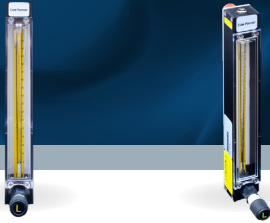


Cole-Parmer® Variable Area Flowmeters

150mm with Cartridge Valve

Cole-Parmer®



These single-flow-tube, variable area flowmeters with cartridge valves are designed for precise low-flow-rate measurements of air and water in mL/minute at a given set of pressure and temperature parameters. The Optigrad™ 150 mm universal scale minimizes parallax and eye fatigue.

The built-in high-resolution control valves offer high sensitivity control and resolution in conjunction with metering tubes of very low flow rates. Other features include aluminum mounting fittings with Buna® O-ring, black anodized aluminum housing consisting of side plates, thick protective magnifying front shield and back plate, and a borosilicate glass flow tube.



Scan the QR code for more information on flowmeters.

APPLICATIONS

- Perfect for metering carrier gases in chromatography, indicating and controlling gases in manufacturing processes, or liquid and gas measurement in laboratories and pilot plants
- Ideal for general-purpose, laboratory, and industrial applications

FEATURES/BENEFITS

- Cartridge valve is ideal for precise low-flow-rate measurements
- Easy installation and exchange of flow tubes
- Max operating temperature range of 121 °C (250 °F)
- Flowmeters feature 1/8" NPT(F) process connections
- Accuracy of ±5% of full-scale reading
- Repeatability of ±0.25%
- Max pressure of 200 psi (13.8 bar)

USA	+1.800.323.4340
	+1.847.549.7600
Canada	+1.800.363.5900
China	86.21.5109.9909
India	+1.800.266.1244

UK	+44 (0) 1480.272279
	+33 (0) 1.87.170142*
	+49 (0) 937.792030*
Italy	+39.02.84349215
All others	+1.847.549.7600

Cole-Parmer®

coleparmer.com

*Inquiries from Germany and France are now handled in our St. Neots office by native-speaking experts.

Specification and Ordering Table

Max Flow Rate (mL/min)		Float	Item Number
Water	Air		
—	34	Stainless	15309-82
2.25	138	Stainless	15309-83
4.9	262	Stainless	15309-84
19.2	816	Stainless	15309-85
44.3	1665	Stainless	15309-86
132.5	4494	Stainless	15309-87
234	7720	Stainless	15309-88
498	16,493	Stainless	15309-89
579	23,105	Glass	15309-90
1972	60,212	Carboloy	15309-91