



Cross & Y-Fittings

CROSS FITTINGS | EQUAL Y-FITTINGS | REDUCTION Y-FITTINGS

BARBED CROSS AND WYE (Y) CONNECTORS

Cross and Y (wye) barb fittings attach directly to a common hose end that in turn leads to a split into two or three outlets depending on the fitting type.

Our superior line of cross fittings, equal Y (wye) fittings, and reduction Y split hose connectors allows for multiple outlets from one common hose end and widely used in beverage lines, or other liquid or gas transfer applications.

Eldon James' equal Y split hose connectors are available in a variety of standard sizes from 1/6" to 1". Reduction Y barb fitting combinations range from 1/8" x 1/4" to 3/4" x 1". Equal barbed cross fitting sizes range from 1/16" to 1/2".

What's more, Eldon James products are PVC/DEHP-free, which eliminates the risk of the leaching and dispersal of pollutants, dioxins, and other harmful chemicals into liquids and the air.

ABOUT OUR NATURAL MATERIALS:

All Cleanroom Manufactured materials are ISO Class 7. *All QC items in this section are available as a Special Order.*

Medical Nylon (MN)

Nylon, which exhibits excellent tensile strength with moderate stiffness and high impact resistance. Great for medical uses to connect multiple tubes with fuels, lubricants, and many other chemicals.

Natural Nylon (NN)

Natural Nylon exhibits excellent tensile strength with moderate stiffness and high impact resistance. Great for automotive and industrial use with fuels, lubricants, and many chemicals.

Natural Kynar® 740 (NK7)

Offers excellent chemical resistance, inherent flame resistance, high gamma radiation resistance, good UV and weather resistance, good mechanical properties, low moisture absorption and good machinability.

Polypropylene (PP)

Polypropylene is a very versatile material and formulated for biomedical and bioprocess applications. It is radiation stable and is resistant to solvents, chemicals, water and other inorganic environments.



ELDON JAMES' FITTINGS ARE WIDELY USED IN BEVERAGE LINES OR OTHER GAS TRANSFER APPLICATIONS.



Equal Y-Fittings

QC =
Cleanroom
Manufactured

HOW TO BUILD YOUR SKU (Material Codes Key on page 188)

PRODUCT NO. [MATERIAL CODE] - [Cleanroom Manufactured(QC)]

YO-1MN-QC



YO-1 Equal Y-Fitting • 1/16 inch Barb

BN • NK7 • NN • PP • PVDF • WN • WP **QC** MN • NK7 • PP

YO-1.5 Equal Y-Fitting • 3/32 inch Barb

BN • NK7 • NN • PP • PVDF • WN • WP **QC** MN • NK7 • PP

YO-2 Equal Y-Fitting • 1/8 inch Barb

BN • GFBN • NK7 • NN • PP • PVDF • WN • WP **QC** MN • NK7 • PP

YO-2.5 Equal Y-Fitting • 5/32 inch Barb

BN • NK7 • NN • PP • PVDF • SS • WN • WP **QC** MN • NK7 • PP

YO-3 Equal Y-Fitting • 3/16 inch Barb

BN • GFBN • NK7 • NN • PP • PVDF • SS • WN • WP **QC** MN • NK7 • PP

YO-4 Equal Y-Fitting • 1/4 inch Barb

BN • GFBN • NK7 • NN • PP • PVDF • WN • WP **QC** MN • NK7 • PP

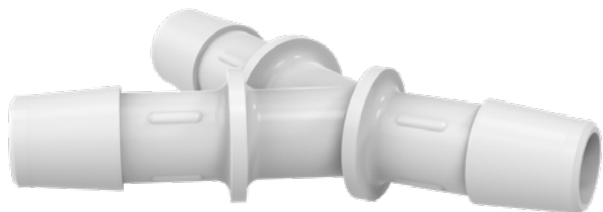
YO-5 Equal Y-Fitting • 5/16 inch Barb

AC • BN • GFBN • NK7 • NN • PP • PVDF • SS **QC** MN • NK7 • PP

YO-6 Equal Y-Fitting • 3/8 inch Barb

BN • GFBN • NK7 • NN • PC • PP • PVDF • SS • WN • WP **QC** MN • NK7 • PP

Equal Y-Fittings (CONTINUED)



Y0-8 Equal Y-Fitting • 1/2 inch Barb

BN • GFBN • NK7 • NN • PP • PVDF • SS • WN • WP **QC** MN • NK7 • PP

Y0-10 Equal Y-Fitting • 5/8 inch Barb

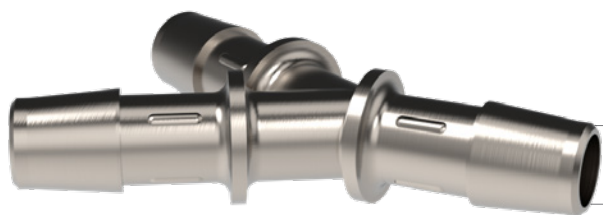
BN • GFBN • NK7 • NN • PP • PVDF • WN • WP **QC** MN • NK7 • PP

Y0-12 Equal Y-Fitting • 3/4 inch Barb

BN • GFBN • NK7 • NN • PP **QC** MN • NK7 • PP

Y0-16 Equal Y-Fitting • 1 inch Barb

BN • NK7 • NN • PP **QC** MN • NK7 • PP



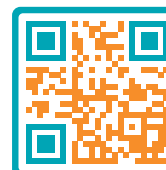
316L Stainless Steel

SALES / ORDER INQUIRIES:

📞 970-667-2728 📠 970-667-3204

✉️ sales@eldonjames.com

🌐 eldonjames.com/cross-y-fittings



Shop All
Fittings

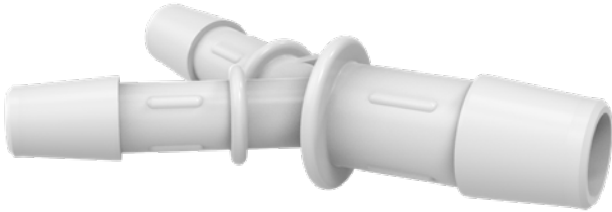
Reduction Y-Fittings

QC =
Cleanroom
Manufactured

HOW TO BUILD YOUR SKU (Material Codes Key on page 188)

PRODUCT NO. [MATERIAL CODE]-[Cleanroom Manufactured(QC)]

RY2-4MN-QC



RY2-4 Reduction Y-Fitting • 1/8 x 1/4 inch Barb

BN • NK7 • NN • PP • WN **QC** MN • NK7 • PP

RY3-5 Reduction Y-Fitting • 3/16 x 5/16 inch Barb

NK7 • NN • PP **QC** MN • NK7 • PP

RY4-6 Reduction Y-Fitting • 1/4 x 3/8 inch Barb

BN • GFBN • NK7 • NN • PP • PVDF • WN • WP **QC** MN • NK7 • PP

RY6-8 Reduction Y-Fitting • 3/8 x 1/2 inch Barb

BN • NK7 • NN • PP **QC** MN • NK7 • PP

RY8-10 Reduction Y-Fitting • 1/2 x 5/8 inch Barb

BN • NK7 • NN • PP **QC** MN • NK7 • PP

RY10-12 Reduction Y-Fitting • 5/8 x 3/4 inch Barb

BN • NK7 • NN • PP **QC** MN • NK7 • PP

RY12-16 Reduction Y-Fitting • 3/4 x 1 inch Barb

BN • NK7 • NN • PP **QC** MN • NK7 • PP