



Adapters, Bulkheads & Panel Mounts

**THREADED ADAPTERS | BRITISH THREADED ADAPTERS |
SCHEDULE 80 ADAPTERS | PANEL MOUNT & BULKHEAD ADAPTERS & NUTS
GARDEN HOSE ADAPTERS | NIPPLES | PLUGS | COLOR CODE CLIPS**

Eldon James' line of threaded adapters, panel mounts, bulkhead adapters, and other fittings allows for the easy and safe connection between tubes and smooth transfer of gases, liquids, and more.

Whether you're looking to lock in your automotive oil lines, plug your medical tubing, or even get a safe, PVC-free adapter for your home's garden hose, Eldon James has the right materials for you.

Threaded barb adapter fittings create a safe connection, and the non-PVC, BPA-free plastic materials of which they are composed mean your liquids, consumers, and the environment will be safe from harmful chemicals.

The threads on our Eldon James adapters and fittings employs a difficult-to-break connection, so you can ensure you have all of the strength and more that you've come to expect from other plastic fittings.

We even have conversion nipples, insert plugs, and more medical grade fittings for times when you need to stop or route the flow of liquid or gases through your tubing.

ABOUT OUR NATURAL MATERIALS:

All Cleanroom Manufactured materials are ISO Class 7.
All QC items in this section are available as a Special Order.

Medical Nylon (MN)

Nylon, which exhibits excellent tensile strength with moderate stiffness and high impact resistance. Great for medical uses to connect multiple tubes with fuels, lubricants, and many other chemicals.

Natural Nylon (NN)

Natural Nylon exhibits excellent tensile strength with moderate stiffness and high impact resistance. Great for automotive and industrial use with fuels, lubricants, and many chemicals.

Natural Kynar® 740 (NK7)

Offers excellent chemical resistance, inherent flame resistance, high gamma radiation resistance, good UV and weather resistance, good mechanical properties, low moisture absorption and good machinability.

Polypropylene (PP)

Polypropylene is a very versatile material and formulated for biomedical and bioprocess applications. It is radiation stable and is resistant to solvents, chemicals, water and other inorganic environments.



**THREADED ADAPTERS , BULKHEAD FITTINGS , PANEL MOUNTS, PIPE NIPPLES,
GARDEN HOSE AND COLOR CODE CLIPS – THREADED COMPONENT SOLUTIONS
FOR THE MEDICAL, FOOD & BEVERAGE, AND AUTOMOTIVE INDUSTRIES.**

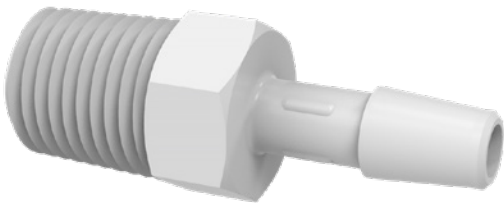
Threaded Adapters

QC =
Cleanroom
Manufactured

HOW TO BUILD YOUR SKU (Material Codes Key on page 188)

PRODUCT NO. [MATERIAL CODE]-[Cleanroom Manufactured(QC)]

A2-2MN-QC



A1-3-200 Adapter • 1/16 inch NPT Thread x 3/16 inch Barb

AC • BN • NK7 • PP • WN **QC** MN • NK7 • PP

A1-4-200 Adapter • 1/16 inch NPT Thread x 1/4 inch Barb

AC • BN • NK7 • NN • PP **QC** MN • NK7 • PP

A2-2 Adapter • 1/8 inch NPT Thread x 1/8 inch Barb

AC • BN • GFBN • NK7 • NN • PP • PVDF • SS • WN • WP **QC** MN • NK7 • PP

A2-2.5 Adapter • 1/8 inch NPT Thread x 5/32 inch Barb

BN • GFBN • NK7 • NN • PP • PVDF • WN • WP **QC** MN • NK7 • PP

A2-3 Adapter • 1/8 inch NPT Thread x 3/16 inch Barb

BN • GFBN • NK7 • NN • PP • PVDF • WN • WP **QC** MN • NK7 • PP

A2-4 Adapter • 1/8 inch NPT Thread x 1/4 inch Barb

AC • BN • GFBN • NK7 • NN • PP • PVDF • SS • WN • WP **QC** MN • NK7 • PP

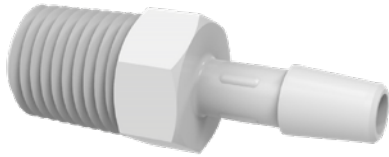
A2-5 Adapter • 1/8 inch NPT Thread x 5/16 inch Barb

BN • GFBN • NK7 • NN • PP • PVDF • SS • WN • WP **QC** MN • NK7 • PP

A2-6 Adapter • 1/8 inch NPT Thread x 3/8 inch Barb

BN • GFBN • NK7 • NN • PP • PVDF • WN • WP **QC** MN • NK7 • PP

Threaded Adapters (CONTINUED)



A4-2 Adapter • 1/4 inch NPT Thread x 1/8 inch Barb

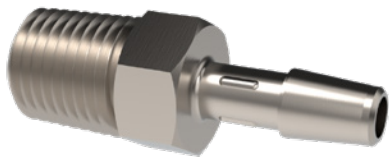
BN • GFBN • NK7 • NN • PP • PVDF • WN • WP **QC** MN • NK7 • PP

A4-2.5 Adapter • 1/4 inch NPT Thread x 5/32 inch Barb

BN • GFBN • NK7 • NN • PP • PVDF • WN • WP **QC** MN • NK7 • PP

A4-3 Adapter • 1/4 inch NPT Thread x 3/16 inch Barb

BN • GFBN • NK7 • NN • PP • PVDF • WN • WP **QC** MN • NK7 • PP



316L Stainless Steel

A4-4 Adapter • 1/4 inch NPT Thread x 1/4 inch Barb

AC • BN • GFBN • NK7 • NN • PP • PVDF • SS • WN • WP

QC MN • NK7 • PP

A4-5 Adapter • 1/4 inch NPT Thread x 5/16 inch Barb

BN • GFBN • NK7 • NN • PP • PVDF • SS • WN • WP **QC** MN • NK7 • PP

A4-6 Adapter • 1/4 inch NPT Thread x 3/8 inch Barb

AC • BN • GFBN • NK7 • NN • PP • PVDF • WN • WP **QC** MN • NK7 • PP

A4-8 Adapter • 1/4 inch NPT Thread x 1/2 inch Barb

BN • GFBN • NK7 • NN • PP • PVDF • WN • WP **QC** MN • NK7 • PP

A6-4 Adapter • 3/8 inch NPT Thread x 1/4 inch Barb

BN • GFBN • NK7 • NN • PP • PVDF • WN • WP **QC** MN • NK7 • PP

A6-5 Adapter • 3/8 inch NPT Thread x 5/16 inch Barb

BN • GFBN • NK7 • NN • PP • PVDF • WN • WP **QC** MN • NK7 • PP

A6-6 Adapter • 3/8 inch NPT Thread x 3/8 inch Barb

AC • BN • GFBN • NK7 • NN • PP • PVDF • WN • WP **QC** MN • NK7 • PP

A6-8 Adapter • 3/8 inch NPT Thread x 1/2 inch Barb

BN • GFBN • NK7 • NN • PP • PVDF • WN • WP **QC** MN • NK7 • PP

Threaded Adapters (CONTINUED)

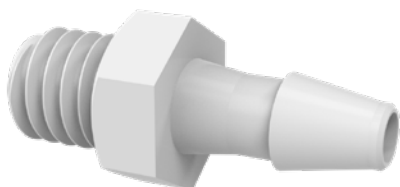


A6-10 Adapter • 3/8 inch NPT Thread x 5/8 inch Barb

AC • BN • GFBN • NK7 • NN • PP • PVDF • WN • WP **QC** MN • NK7 • PP

A6-12 Adapter • 3/8 inch NPT Thread x 3/4 inch Barb

AC • BN • GFBN • NK7 • NN • PP • PVDF • WN • WP **QC** MN • NK7 • PP



A6M-1.5-200 Adapter • M6 Thread x 3/32 inch Barb

BN • NK7 • NN • PP • PVDF • WN

A6M-2-200 Adapter • M6 Thread x 1/8 inch Barb

BN • NK7 • NN • PP • PVDF • WN

A6M-3-200 Adapter • M6 Thread x 3/16 inch Barb

BN • NK7 • NN • PP • PVDF



A8-4 Adapter • 1/2 inch NPT Thread x 1/4 inch Barb

BN • GFBN • NK7 • NN • PP • PVDF • WN • WP **QC** MN • NK7 • PP

A8-5 Adapter • 1/2 inch NPT Thread x 5/16 inch Barb

BN • GFBN • NK7 • NN • PP • PVDF • WN • WP **QC** MN • NK7 • PP

A8-6 Adapter • 1/2 inch NPT Thread x 3/8 inch Barb

BN • GFBN • NK7 • NN • PP • PVDF • WN • WP **QC** MN • NK7 • PP

A8-8 Adapter • 1/2 inch NPT Thread x 1/2 inch Barb

BN • GFBN • NK7 • NN • PP • PVDF • WN • WP **QC** MN • NK7 • PP

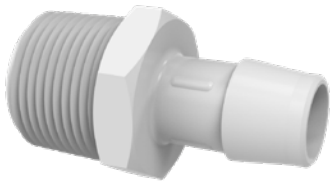
A8-10 Adapter • 1/2 inch NPT Thread x 5/8 inch Barb

BN • GFBN • NK7 • NN • PP • PVDF • WN • WP **QC** MN • NK7 • PP

A8-12 Adapter • 1/2 inch NPT Thread x 3/4 inch Barb

BN • GFBN • NK7 • NN • PP • PVDF • WN • WP **QC** MN • NK7 • PP

Threaded Adapters (CONTINUED)



A12-4 Adapter • 3/4 inch NPT Thread x 1/4 inch Barb

BN • GFBN • NK7 • NN • PP • PVDF • WN • WP **QC** MN • NK7 • PP

A12-6 Adapter • 3/4 inch NPT Thread x 3/8 inch Barb

BN • GFBN • NK7 • NN • PP • PVDF • WN • WP **QC** MN • NK7 • PP

A12-8 Adapter • 3/4 inch NPT Thread x 1/2 inch Barb

BN • GFBN • NK7 • NN • PP • PVDF • WN • WP **QC** MN • NK7 • PP

A12-10 Adapter • 3/4 inch NPT Thread x 5/8 inch Barb

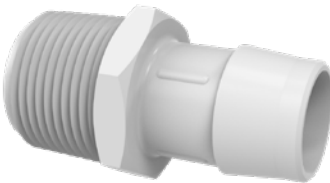
BN • GFBN • NK7 • NN • PP • PVDF • WN • WP **QC** MN • NK7 • PP

A12-12 Adapter • 3/4 inch NPT Thread x 3/4 inch Barb

AC • BN • GFBN • NK7 • NN • PP • PVDF • WN • WP **QC** MN • NK7 • PP

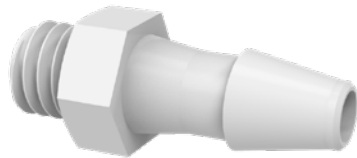
A12-16 Adapter • 3/4 inch NPT Thread x 1 inch Barb

BN • GFBN • NK7 • NN • PP • PVDF • WN • WP **QC** MN • NK7 • PP



A16-16 Adapter • 1 inch NPT Thread x 1 inch Barb

AC • BN • GFBN • NK7 • NN • PP • PVDF • WN • WP **QC** MN • NK7 • PP



A1032-1-200 Adapter • 10-32 UNF Thread x 1/16 inch Barb

AC • BN • NK7 • NN • PP • WN • WP **QC** MN • NK7 • PP

A1032-1.5-200 Adapter • 10-32 UNF Thread x 3/32 inch Barb

AC • BN • NK7 • NN • PP • PVDF • WN • WP **QC** MN • NK7 • PP

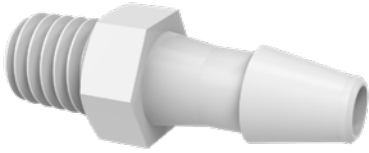
A1032-2-200 Adapter • 10-32 UNF Thread x 1/8 inch Barb

AC • BN • NK7 • NN • PP • PVDF • WN • WP **QC** MN • NK7 • PP

A1032-2.5-200 Adapter • 10-32 UNF Thread x 5/32 inch Barb

AC • BN • NK7 • NN • PP • PVDF • WN **QC** MN • NK7 • PP

Threaded Adapters (CONTINUED)



A1032T-1-200 Adapter • 10–32 Taper Thread x 1/16 inch Barb

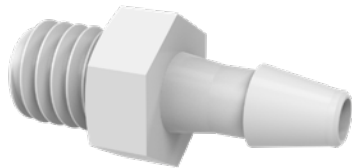
BN • NK7 • NN • PP • WN **QC** MN • NK7 • PP

A1032T-1.5-200 Adapter • 10–32 Taper Thread x 3/32 inch Barb

BN • NK7 • PP **QC** MN • NK7 • PP

A1032T-2-200 Adapter • 10–32 Taper Thread x 1/8 inch Barb

BN • NK7 • NN • PP • PVDF • WN • WP **QC** MN • NK7 • PP



A1032X-1-200 Adapter • 10–32 Extended Thread x 1/16 inch Barb

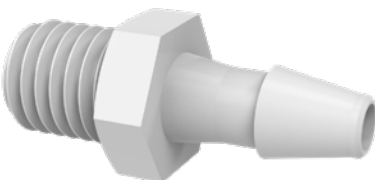
BN • NK7 • NN • PP • PVDF • WN **QC** MN • NK7 • PP

A1032X-1.5-200 Adapter • 10–32 Extended Thread x 3/32 inch Barb

BN • NK7 • NN • PP • PVDF • WN **QC** MN • NK7 • PP

A1032X-2.5-200 Adapter • 10–32 Extended Thread x 5/32 inch Barb

BN • NK7 • NN • PP • PVDF • WN **QC** MN • NK7 • PP



A1428-1-200 Adapter • 1/4 inch–28 UNF Thread x 1/16 inch Barb

AC • BN • NK7 • NN • PP • PVDF • WN **QC** MN • NK7 • PP

A1428-1.5-200 Adapter • 1/4 inch–28 UNF Thread x 3/32 inch Barb

AC • BN • NK7 • NN • PP • PVDF • WN **QC** MN • NK7 • PP

A1428-2-200 Adapter • 1/4 inch–28 UNF Thread x 1/8 inch Barb

AC • BN • NK7 • NN • PP • PVDF • WN • WP **QC** MN • NK7 • PP

A1428-2.5-200 Adapter • 1/4 inch–28 UNF Thread x 5/32 inch Barb

AC • BN • NK7 • NN • PP • PVDF • WN • WP **QC** MN • NK7 • PP

A1428-3-200 Adapter • 1/4 inch–28 UNF Thread x 3/16 inch Barb

AC • BN • NK7 • NN • PP • PVDF • WN • WP **QC** MN • NK7 • PP