



Shop All
Elbows

Elbow Fittings

**EQUAL 90 DEGREE ELBOWS | REDUCTION ELBOWS
THREADED ELBOWS | BRITISH THREADED ELBOWS**

Change your flow with our easy to install 90-degree elbow fitting or elbow reducer. Our quarter bend elbow is made to fit in a tight space. We offer threaded 90° elbows with a wide range of thread types NPT, UNF, and NPSM as well as British threaded elbows (BSPT).

To allow easy change of direction for your medical, automotive, or beverage applications, we manufacture our elbow fittings our single barb which allows the tube to be compressed behind the barb. This creates a seal that is far more secure than what can be achieved using fittings the multiple barb configurations.

The benefits of the Eldon James' innovative barb fittings include:

- A single barb design, ranging from 1/16th of an inch to one inch.
- An anti-rotation device located on the barb shaft prevents the tubing from rotating or twisting on the elbow fitting.
- A smooth, glass-like surface to allow for an excellent seal within the tube.
- No parting lines, which are present in multiple barb fittings and can create a leak path and ultimately cause failure.

Our innovative elbow fittings are available as equal 90-degree elbows, reduction elbows, threaded elbows, and British threaded elbow styles to match industry requirements.

ABOUT OUR NATURAL MATERIALS:

All Cleanroom Manufactured materials are ISO Class 7. *All QC items in this section are available as a Special Order.*

Medical Nylon (MN)

Nylon, which exhibits excellent tensile strength with moderate stiffness and high impact resistance. Great for medical uses to connect multiple tubes with fuels, lubricants, and many other chemicals.

Natural Nylon (NN)

Natural Nylon exhibits excellent tensile strength with moderate stiffness and high impact resistance. Great for automotive and industrial use with fuels, lubricants, and many chemicals.

Natural Kynar® 740 (NK7)

Offers excellent chemical resistance, inherent flame resistance, high gamma radiation resistance, good UV and weather resistance, good mechanical properties, low moisture absorption and good machinability.

Polypropylene (PP)

Polypropylene is a very versatile material and formulated for biomedical and bioprocess applications. It is radiation stable and is resistant to solvents, chemicals, water and other inorganic environments.



**ELDON JAMES' FITTINGS HAS YOUR SOLUTION FOR THE
MEDICAL, FOOD & BEVERAGE, AND AUTOMOTIVE INDUSTRIES.**



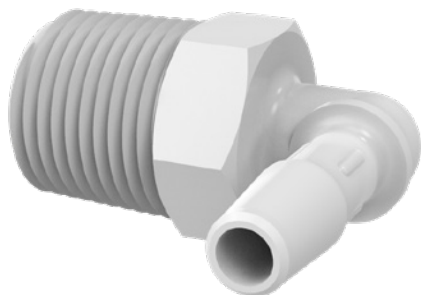
Threaded Elbows

QC =
Cleanroom
Manufactured

HOW TO BUILD YOUR SKU (Material Codes Key on page 188)

PRODUCT NO. [MATERIAL CODE]-[Cleanroom Manufactured(QC)]

L2-1-200MN-QC



L2-1-200 Threaded Elbow • 1/18 inch – 27 NPT x 1/16 inch Barb

AC • BN • NK7 • NN • PP **QC** MN • NK7 • PP

L2-1.5-200 Threaded Elbow • 1/18 inch – 27 NPT x 3/32 inch Barb

BN • NK7 • NN • PP • WN **QC** MN • NK7 • PP

L2-2 Threaded Elbow • 1/8 inch NPT x 1/8 inch Barb

BN • GFBN • NK7 • NN • PP • PVDF • WN • WP **QC** MN • NK7 • PP

L2-2.5 Threaded Elbow • 1/8 inch NPT x 5/32 inch Barb

BN • GFBN • NK7 • NN • PP • PVDF • WN • WP **QC** MN • NK7 • PP

L2-3 Threaded Elbow • 1/8 inch NPT x 3/16 inch Barb

BN • GFBN • NK7 • NN • PP • PVDF • WN • WP **QC** MN • NK7 • PP

L2-4 Threaded Elbow • 1/8 inch NPT x 1/4 inch Tube Barb

AC • BN • GFBN • NK7 • NN • PP • PVDF • WN • WP **QC** MN • NK7 • PP

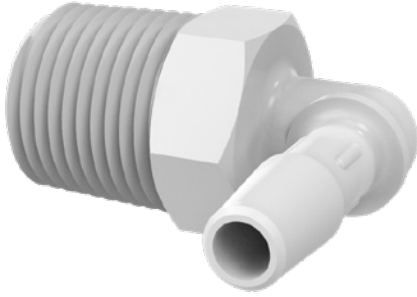
L2-5 Threaded Elbow • 1/8 inch NPT x 5/16 inch Barb

BN • GFBN • NK7 • NN • PP • PVDF • WN • WP **QC** MN • NK7 • PP

L2-6 Threaded Elbow • 1/8 inch NPT x 3/8 inch Barb

BN • GFBN • NK7 • NN • PP • PVDF • WN • WP **QC** MN • NK7 • PP

Threaded Elbows (CONTINUED)



L4-2 Threaded Elbow • 1/4 inch NPT x 1/8 inch Barb

BN • GFBN • NK7 • NN • PP • PVDF • WN • WP **QC** MN • NK7 • PP

L4-2.5 Threaded Elbow • 1/4 inch NPT x 5/32 inch Barb

BN • GFBN • NK7 • NN • PP • PVDF • WN • WP **QC** MN • NK7 • PP

L4-3 Threaded Elbow • 1/4 inch NPT x 3/16 inch Barb

BN • GFBN • NK7 • NN • PP • PVDF • WN • WP **QC** MN • NK7 • PP

L4-4 Threaded Elbow • 1/4 inch NPT x 1/4 inch Barb

AC • BN • GFBN • NK7 • NN • PP • PVDF • WN • WP **QC** MN • NK7 • PP

L4-5 Threaded Elbow • 1/4 inch NPT x 5/16 inch Barb

BN • GFBN • NK7 • NN • PP • PVDF • WN • WP **QC** MN • NK7 • PP

L4-6 Threaded Elbow • 1/4 inch NPT x 3/8 inch Barb

AC • BN • GFBN • NK7 • NN • PP • PVDF • WN • WP **QC** MN • NK7 • PP

L4-8 Threaded Elbow • 1/4 inch NPT x 1/2 inch Barb

BN • GFBN • NK7 • NN • PP • PVDF • WN • WP **QC** MN • NK7 • PP

L6-4 Threaded Elbow • 3/8 inch NPT x 1/4 inch Barb

BN • GFBN • NK7 • NN • PP • PVDF • WN • WP **QC** MN • NK7 • PP

L6-5 Threaded Elbow • 3/8 inch NPT x 5/16 inch Barb

BN • GFBN • NK7 • NN • PP • PVDF • WN • WP **QC** MN • NK7 • PP



Threaded Elbows (CONTINUED)

L6-6 Threaded Elbow • 3/8 inch NPT x 3/8 inch Barb

AC • BN • GFBN • NK7 • NN • PP • PVDF • WN • WP **QC** MN • NK7 • PP

L6-8 Threaded Elbow • 3/8 inch NPT x 1/2 inch Barb

AC • BN • GFBN • NK7 • NN • PP • PVDF • WN • WP **QC** MN • NK7 • PP

L8-4 Threaded Elbow • 1/2 inch NPT x 1/4 inch Barb

BN • GFBN • NK7 • NN • PP • PVDF • WN • WP **QC** MN • NK7 • PP

L8-6 Threaded Elbow • 1/2 inch NPT x 3/8 inch Barb

BN • GFBN • NK7 • NN • PP • PVDF • WN • WP **QC** MN • NK7 • PP

L8-8 Threaded Elbow • 1/2 inch NPT x 1/2 inch Barb

BN • GFBN • NK7 • NN • PP • PVDF • WN • WP **QC** MN • NK7 • PP

L8-10 Threaded Elbow • 1/2 inch NPT x 5/8 inch Barb

BN • GFBN • NK7 • NN • PP • PVDF • WN • WP **QC** MN • NK7 • PP

L8-12 Threaded Elbow • 1/2 inch NPT x 3/4 inch Barb

BN • GFBN • NK7 • NN • PP • PVDF • WN • WP **QC** MN • NK7 • PP

L12-4 Threaded Elbow • 3/4 inch NPT x 1/4 inch Barb

BN • GFBN • NK7 • NN • PP • PVDF • WN • WP **QC** MN • NK7 • PP

L12-6 Threaded Elbow • 3/4 inch NPT x 3/8 inch Barb

BN • GFBN • NK7 • NN • PP • PVDF • WN • WP **QC** MN • NK7 • PP

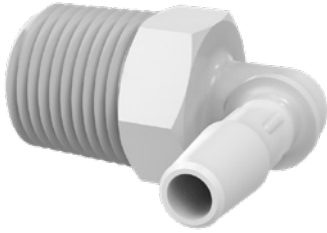
L12-8 Threaded Elbow • 3/4 inch NPT x 1/2 inch Barb

BN • GFBN • NK7 • NN • PP • PVDF • WN • WP **QC** MN • NK7 • PP

L12-10 Threaded Elbow • 3/4 inch NPT x 5/8 inch Barb

BN • GFBN • NK7 • NN • PP • PVDF • WN • WP **QC** MN • NK7 • PP

Threaded Elbows (CONTINUED)



L12-12 Threaded Elbow • 3/4 inch NPT x 3/4 inch Barb

BN • GFBN • NK7 • NN • PP • PVDF • WN • WP **QC** MN • NK7 • PP

L12-16 Threaded Elbow • 3/4 inch NPT x 1 inch Barb

BN • GFBN • NK7 • NN • PP • PVDF • WN • WP **QC** MN • NK7 • PP

L16-12 Threaded Elbow • 1 inch NPT x 3/4 inch Barb

BN • GFBN • NK7 • NN • PP • PVDF • WN • WP **QC** MN • NK7 • PP

L16-16 Threaded Elbow • 1 inch NPT x 1 inch Barb

AC • BN • GFBN • NK7 • NN • PP • PVDF • WN • WP **QC** MN • NK7 • PP



L1032-1-200 Threaded Elbow • 10 – 32 UNF x 1/8 inch Barb

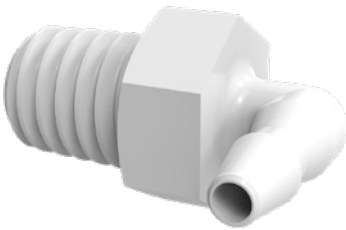
AC • BN • NK7 • NN • PP • WN • WP **QC** MN • NK7 • PP

L1032-1.5-200 Threaded Elbow • 10 – 32 UNF x 3/32 inch Barb

BN • NK7 • NN • PP **QC** MN • NK7 • PP

L1032-2-200 Threaded Elbow • 10 – 32 UNF x 1/16 inch Barb

AC • BN • NK7 • NN • PP • PVDF • WN • WP **QC** MN • NK7 • PP

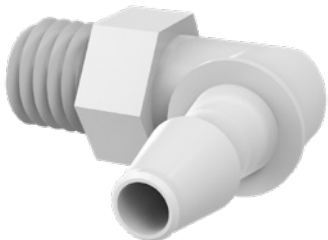


L1032T-1-200 Threaded Elbow • 10 – 32 Taper x 1/16 inch Barb

BN • NK7 • NN • PP • PVDF • WN • WP **QC** MN • NK7 • PP

L1032T-2-200 Threaded Elbow • 10 – 32 Taper x 1/8 inch Barb

BN • NK7 • NN • PP • PVDF • WN • WP **QC** MN • NK7 • PP



L1428-2-200 Threaded Elbow • 1/4 inch – 28 UNF x 1/8 inch Barb

AC • BN • NK7 • NN • PP • WN **QC** MN • NK7 • PP

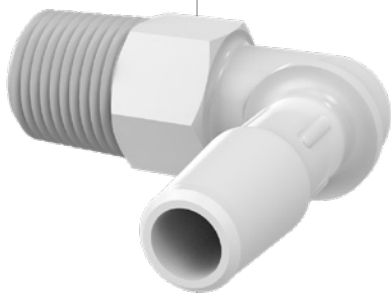
L1428-3-200 Threaded Elbow • 1/4 inch – 28 UNF x 3/16 inch Barb

AC • NK7 • NN • PP **QC** MN • NK7 • PP

British Threaded Elbows

HOW TO BUILD YOUR SKU (Material Codes Key on page 188)

PRODUCT NO. [MATERIAL CODE] → L2B-2NK



BSPT threads utilize the Whitworth thread form, which is designed to provide a pressure-tight fit through mating of the threads. This is accomplished by cutting the threads on a taper. Because they are tapered, the thread can only screw into the companion female thread a certain distance before it jams. The standard specifies this distance as a length based on hand-tight engagement; a convenient rule-of-thumb for plastic threads is: finger-tight plus 1/2 to 1 turn with a wrench. Do not over-tighten plastic threads – stress on the fitting can result in its failure.

L2B-2 British Threaded Elbow • 1/8 inch BSPT x 1/8 inch Barb

BN • GFBN • NK7 • NN • PP • PVDF • WN • WP

L2B-2.5 British Threaded Elbow • 1/8 inch BSPT x 5/32 inch Barb

BN • GFBN • NK7 • NN • PP • PVDF • WN • WP

L2B-3 British Threaded Elbow • 1/8 inch BSPT x 3/16 inch Barb

NN

L2B-4 British Threaded Elbow • 1/8 inch BSPT x 1/4 inch Barb

BN • GFBN • NK7 • NN • PP • PVDF • WN • WP

L2B-5 British Threaded Elbow • 1/8 inch BSPT x 5/16 inch Barb

BN • GFBN • NK7 • NN • PP • PVDF • WN • WP

L2B-6 British Threaded Elbow • 1/8 inch BSPT x 3/8 inch Barb

BN • GFBN • NK7 • NN • PP • PVDF • WN • WP

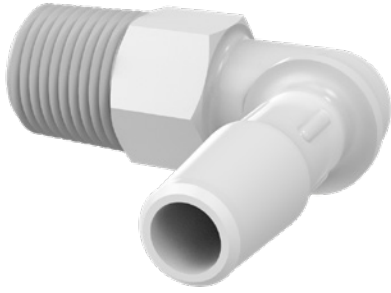
L4B-2 British Threaded Elbow • 1/4 inch BSPT x 1/8 inch Barb

BN • GFBN • NK7 • NN • PP • PVDF • WN • WP

L4B-2.5 British Threaded Elbow • 1/4 inch BSPT x 5/32 inch Barb

BN • GFBN • NK7 • NN • PP • PVDF • WN • WP

British Threaded Elbows (CONTINUED)



L4B-3 British Threaded Elbow • 1/4 inch BSPT x 3/16 inch Barb

BN • GFBN • NK7 • NN • PP • PVDF • WN • WP

L4B-4 British Threaded Elbow • 1/4 inch BSPT x 1/4 inch Barb

BN • GFBN • NK7 • NN • PP • PVDF • WN • WP

L4B-5 British Threaded Elbow • 1/4 inch BSPT x 5/16 inch Barb

BN • GFBN • NK7 • NN • PP • PVDF • WN • WP

L4B-6 British Threaded Elbow • 1/4 inch BSPT x 3/8 inch Barb

BN • GFBN • NK7 • NN • PP • PVDF • WN • WP

L4B-8 British Threaded Elbow • 1/4 inch BSPT x 1/2 inch Barb

BN • GFBN • NK7 • NN • PP • PVDF • WN • WP

L6B-4 British Threaded Elbow • 3/8 inch BSPT x 1/4 inch Barb

BN • GFBN • NK7 • NN • PP • PVDF • WN • WP

L6B-5 British Threaded Elbow • 3/8 inch BSPT x 5/16 inch Barb

BN • GFBN • NK7 • NN • PP • PVDF • WN • WP

L6B-6 British Threaded Elbow • 3/8 inch BSPT x 3/8 inch Barb

BN • GFBN • NK7 • NN • PP • PVDF • WN • WP

L6B-8 British Threaded Elbow • 3/8 inch BSPT x 1/2 inch Barb

BN • GFBN • NK7 • NN • PP • PVDF • WN • WP