

ADAPTERS | BARB FITTINGS | PANEL MOUNT FITTINGS | CAPS | PLUGS  
SANITARY FLANGE FITTINGS | PORT PLATE / BAG PORT FITTINGS  
MICRO-CONNECT BARB OPEN & VALVED FLOW FITTINGS  
MICRO-CONNECT PANEL MOUNT OPEN & VALVED FLOW FITTINGS

SeriesLock®  
CHANGING THE WAY YOU CONNECT™





Learn more about SeriesLock®

# SeriesLock®

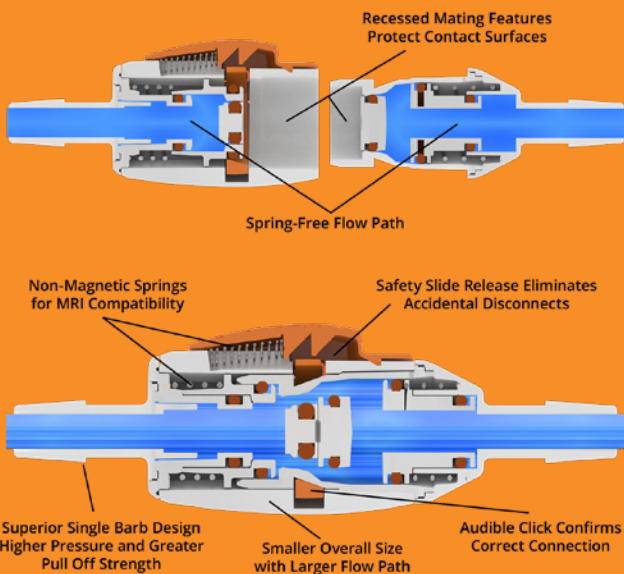
## CHANGING THE WAY YOU CONNECT™

The unique Spring-Free Flow Path® quick disconnect coupler allows a larger volume of fluid to pass through at lower line pressures, optimizing the flow, reducing restriction, turbulence, foaming, and bubbles.

Four body sizes are available to accommodate the application of 1/16" ID to 1" ID Tubing. Connection options: Barb, Panel Mount, Sanitary Flange, Port Plate/Bag Port, NPT Thread, and Micro-Connect.

## ADVANTAGES INCLUDE:

- Spring-Free Flow Path®
- Male valved assemblies with vented spring chamber eliminate fluid cross-over
- Valved and open flow options
- No-spill disconnect
- Aseptic
- Superior single barb design
- Smaller size than comparable couplers
- USP Class VI/ISO10993 compliant materials
- Audible click confirms correct connection
- Safety slide release minimizes accidental disconnects
- Can be sterilized
  - PP (radiation, EtO)
  - PVDF (autoclave, radiation, etc)
- Non-magnetic spring options available



## CONNECTIONS:

Tubing Size:

- 1/16"
- 1/8"
- 3/16"
- 1/4"
- 5/16"
- 3/8"
- 1/2"
- 5/8"
- 3/4"
- 1"

## PRESSURE:

Series 100 - Vacuum to 90psi, 6.2 bar  
Series 200 - Vacuum to 60psi, 4.1 bar

## TEMPERATURE (CONTINUOUS):

- AC: 32°F to 180°F (0°C to 82°C)
- GFBN: 32°F to 282°F (0°C to 139°C)
- PP: 32°F to 160°F (0°C to 71°C)
- PVDF: 32°F to 250°F (0°C to 121°C)
- PS: -40°F to 282°F (-40°C to 139°C)

## SPILLAGE:

At Rated Pressures

- Small Housing (1/8" – 3/16" Tubing) <0.05cc per disconnect
- Medium Housing (1/4" – 3/8" Tubing) <0.05cc per disconnect
- Large Housing (1/2" – 3/4" Tubing) <0.1cc per disconnect
- Micro Housing (1/16" to 1/4" Tubing) <0.05cc per disconnect

The SeriesLock® spring free and quick disconnect has features covered by the following US Patents and Patent Applications.

US10,173,046 · US10,293,150 · US10,350,401  
US10,583,281 · US11,027,111 · US2018/0304066  
US2019/0269901 · US2020/0206491  
US2021/0290927

The Port Plate product is covered by US16/917,535. Patent pending.

Patents: <https://SeriesLock.com/Patents>



# Housing Materials

## Acetal (AC)



Opaque white in color with high stiffness, toughness and high wear resistance due to naturally high lubricity. Excellent long-term dimensional stability with high creep and fatigue resistance. Resistance to alcohols, esters, ketones, and aliphatic/aromatic hydrocarbons. Medical grade material with USP Class VI and ISO 10993-5 (cytotoxicity) ratings. Compliant to FDA 21 CFR 177.2470, Regulation No. 10/2011, REACH EC 1907/2006, Europe Decision 2001/2/EC:TSE, BSE – No Animal Origin and Phthalate/Latex/BPA free.

## Glass-Filled Black Nylon (GFBN)



Gloss black in color with extremely high stiffness, impact resistance and wear resistance. Material can handle high stress loading at elevated temperatures and lower strains. Resistance to fuels, lubricants and many chemicals but may be vulnerable to attack by phenols, strong acids and oxidizing agents. Compliant to PROP65, REACH 191, EU Directive 2011/65/ EC Restriction of Hazardous Substances (RoHS), EU Directive 2003/11/EC, and EU Directive 2015/863-ROHS.

## Polypropylene (PP)



Translucent in color produced without animal derived components. Material can be sterilized with radiation, ETO, and autoclave(1) methods. Excellent single use / limited reuse material for economy and Medical grade material with USP Class VI, USP 85, USP 88, USP 661 ratings and ISO 10993-5 (cytotoxicity) ratings. Compliant to FDA 21 CFR 177.1520(a) and (c). Europe Decision 2001/2/EC:TSE, BSE – No Animal Origin and Phthalate/Latex/BPA free.

## Polysulfone (PS)



Tough, rigid, high strength material suitable for continuous use at 300°F. Withstands oxidation, hydrolysis, prolonged high temperature exposure and repeated sterilization. Resistance to mineral acids, alkali and salt solutions, detergents and hydrocarbon oils. May be attacked by ketones, chlorinated hydrocarbons and aromatic hydrocarbons. Europe Decision 2001/2/ EC:TSE, BSE – No Animal Origin and Phthalate/Latex/BPA free. Compliant to FDA 21 CFR 177.1655 and approved by the NSF.

## Polyvinylidene Fluoride (PVDF) / Kynar®



Outstanding chemical and UV resistance at both ambient and elevated temperatures. Material with high barrier properties, high purity and good mechanical and thermal properties. Abrasion, impact, flame and corrosion and chemical resistance. Europe Decision 2001/2/ EC:TSE, BSE – No Animal Origin and Phthalate/Latex/BPA free. USP Class VI, and various FDA and USDA certifications.

# Button Color

## Orange button is standard.

Natural, Red and Blue are special order only.

## O-Ring Selection



### Buna-N - Standard

Buna-N (also known as nitrile or NBR O-rings) are the most widely used o-ring material and offer excellent sealing and mechanical properties, excellent resistance to oils, solvents, gasoline, and petroleum-based fluids.

Temperature range: -20° to 225°F (-28° to 107°C)

SAE AS568, SAE J200, ASTM D2000



### EPDM - Option

Ethylene-propylene-diene rubber (also known as EPR) is resistant to extreme cold, steam, hot water, sunlight and UV, dilute acids, ketones, alkalis. Not for use with solvents, aromatic hydrocarbons.

Temperature range: -40° to 212°F (-40° to 100°C)

SAE AS568, ASTM D2000



### Silicone - Option Non Lubricated Silicone - Option\*

Silicone is resistant to extreme temperatures, outstanding flexural and fatigue life, and low compression set. Resistance to fungal growth, UV and ozone exposure, and weathering. Not for use with fuels, silicone and petroleum-based oils, and acids.

\*Autoclave sterilization with the use of non-lube silicone o-rings and Polypropylene materials is not recommended.

Temperature range: -40°F to +400°F (-40°C to +204°C)

SAE AS568, SAE J200



### Viton - Option

Viton exhibits excellent resistance to high temperature and low compression set, F grade.

Temperature range: 0°F to +400° (-17°C to +204°C).

SAE AS568, SAE J200, ASTM D2000

## Spring Selection



### 302 Stainless Steel - Standard

ASTM A313



### Non-Magnetic - Option

ASTM F1058, ASTM B139

# Barb Fittings

## HOW TO BUILD YOUR SKU (Material Codes Key on page 188)



**[SERIES TYPE]**

B - BARB

**[BODY TYPE]**

M - MALE

F - FEMALE

**[FLOW TYPE]**

O - OPEN FLOW

V - VALVE FLOW

**[MATERIAL]**

A - ACETAL

K - KYNAR®

P - POLYPROPYLENE

S - POLYSULFONE

N - GF BLACK NYLON

**[BUTTON COLOR]**

(female only)

O - ORANGE

W - WHITE

R - RED

B - BLUE

**[O-RING TYPE]**

B - BUNA-N

E - EPDM

S - SILICONE

V - VITON

NL - NON-LUBE SILICONE

**[SPRING TYPE]**

S - 302 SST

E - NON-METALLIC

**[BARB SIZE]**

2 - 1/8"

3 - 3/16"

4 - 1/4"

5 - 5/16"

6 - 3/8"

8 - 1/2"

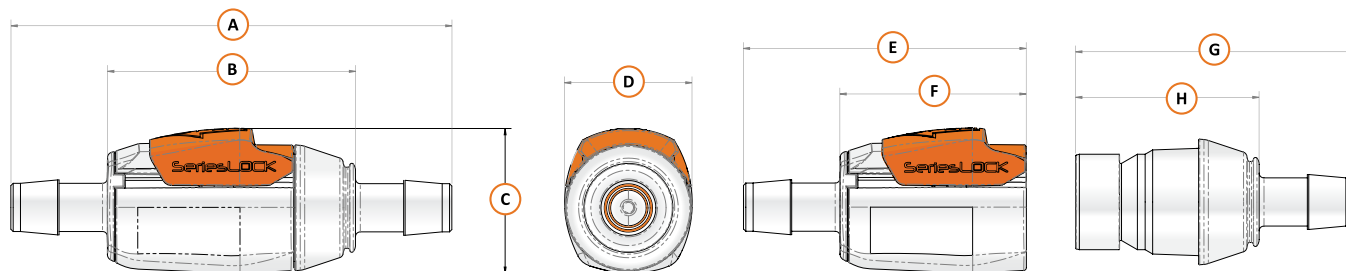
10 - 5/8"

12 - 3/4"

**[PACKAGE QTY]**

01 - SINGLE UNIT

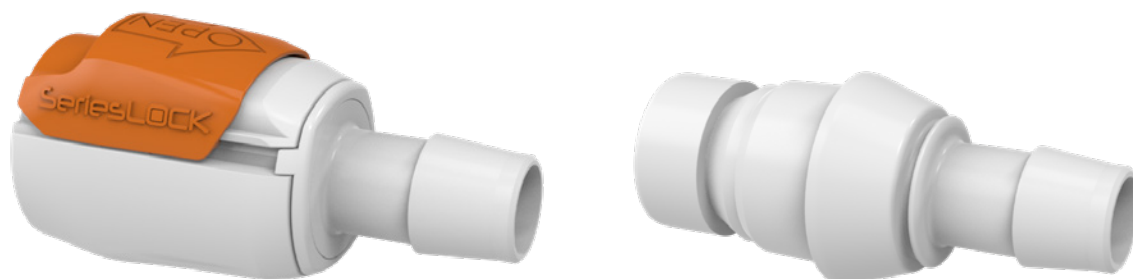
10 - 10 PK



### BARB FITTINGS (DIMENSION IN INCHES)

Tubing Size	A	B	C	D	E	F	G	H
1/8"	2.60	1.80	0.90	0.84	1.85	1.44	1.70	1.30
3/16"	3.00	1.80	0.90	0.84	2.05	1.44	1.90	1.30
1/4"	3.46	1.98	1.12	0.99	2.30	1.56	2.29	1.45
3/8"	3.66	1.98	1.12	0.99	2.40	1.56	2.29	1.45
1/2"	4.58	2.57	1.50	1.32	2.93	1.93	2.90	1.90
3/4"	4.97	2.57	1.50	1.32	3.13	1.93	3.10	1.90
1"	5.78	2.98	1.82	1.58	3.64	2.23	3.60	2.20

# Barb Fittings (CONTINUED)



VALVED ASSEMBLY WEIGHTS (GR)						
Tubing Size	Female Assembly			Male Assembly		
	PP	PVDF	GFBN	PP	PVDF	GFBN
1/8"	7	12	11	4	6	6
3/16"	8	13	12	4	7	6
1/4"	11	18	17	6	9	9
3/8"	11	19	17	6	9	9
1/2"	25	42	38	15	25	22
3/4"	27	45	41	15	27	23
1"	40	71	-	23	46	-

OPEN ASSEMBLY WEIGHTS (GR)						
Tubing Size	Female Assembly			Male Assembly		
	PP	PVDF	GFBN	PP	PVDF	GFBN
1/8"	7	12	11	2	4	3
3/16"	8	13	12	2	4	3
1/4"	10	17	15	3	5	4
3/8"	10	18	16	3	6	4
1/2"	22	39	34	9	18	14
3/4"	24	42	37	9	18	14
1"	38	69	-	21	44	-

## SALES / ORDER INQUIRIES:

📞 970-667-2728 📠 970-667-3204

✉ sales@eldonjames.com

🌐 eldonjames.com/serieslock-quick-disconnect-fittings



Learn more about SeriesLock®

# Panel Mount Male Fittings

## HOW TO BUILD YOUR SKU (Material Codes Key on page 188)



**[SERIES TYPE]**

PM - PANEL MOUNT

**[BODY TYPE]**

M - MALE  
F - FEMALE

**[FLOW TYPE]**

O - OPEN FLOW  
V - VALVE FLOW

**[MATERIAL]**

A - ACETAL  
K - KYNAR®  
P - POLYPROPYLENE  
S - POLYSULFONE  
N - GF BLACK NYLON

**[BUTTON COLOR]**

(female only)  
O - ORANGE  
W - WHITE  
R - RED  
B - BLUE

**[O-RING TYPE]**

B - BUNA-N  
E - EPDM  
S - SILICONE  
V - VITON  
NL - NON-LUBE SILICONE

**[SPRING TYPE]**

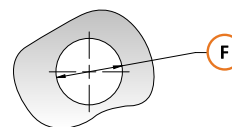
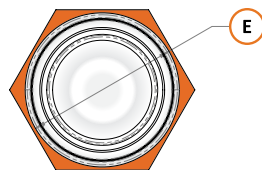
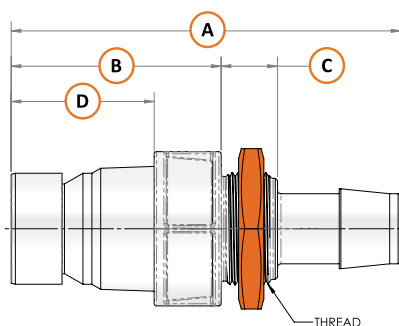
S - 302 SST  
E - NON-METALLIC

**[BARB SIZE]**

2 - 1/8"  
3 - 3/16"  
4 - 1/4"  
5 - 5/16"  
6 - 3/8"  
8 - 1/2"  
10 - 5/8"  
12 - 3/4"

**[PACKAGE QTY]**

01 - SINGLE UNIT  
10 - 10 PK

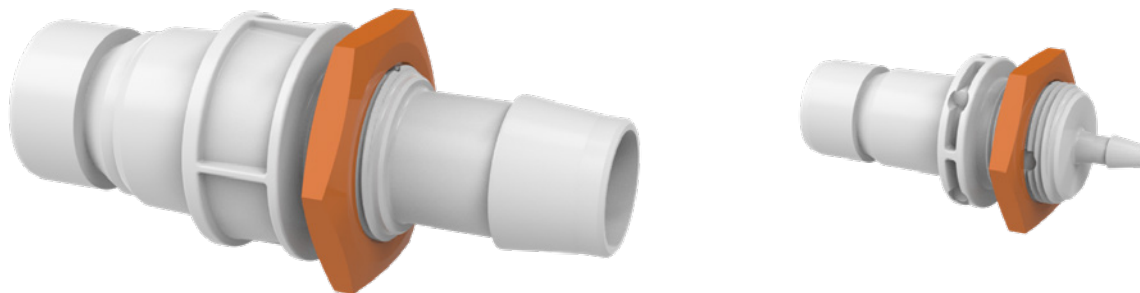


Panel Mount Hole Dimensions

### PANEL MOUNT FITTINGS (DIMENSION IN INCHES)

Tubing Size	A	B	C	D	E	F
1/8"	2.04	1.14	0.5	0.97	0.87	0.695
3/16"	2.24	1.14	0.5	0.97	0.87	0.695
1/4"	2.68	1.45	0.5	1.05	1	0.695
5/16"	2.73	1.45	0.5	1.05	1	0.695
3/8"	2.78	1.45	0.5	1.05	1	0.695
1/2"	3.38	1.87	0.5	1.27	1.37	1
5/8"	3.48	1.87	0.5	1.27	1.37	1
3/4"	3.58	1.87	0.5	1.27	1.37	1
1"	3.65	1.54	0.7	1.47	2.13	1.760

# Panel Mount Male Fittings (CONTINUED)



**OPEN AND VALVED ASSEMBLIES WEIGHTS (GR)**

Tubing Size	Valved Assembly			Open Assembly		
	PP	PVDF	GFBN	PP	PVDF	GFBN
1/8"	6	8	7	4	7	6
3/16"	6	8	7	4	7	6
1/4"	9	13	12	6	12	11
5/16"	9	13	12	6	12	11
3/8"	10	14	13	6	12	11
1/2"	20	24	22	14	20	16
5/8"	20	24	22	14	20	16
3/4"	21	25	23	15	21	17
1"	31	60	-	25	56	-

## SALES / ORDER INQUIRIES:

📞 970-667-2728 📠 970-667-3204

✉ sales@eldonjames.com

🌐 eldonjames.com/serieslock-quick-disconnect-fittings



# 3/4" Mini Sanitary Flange Fittings

## HOW TO BUILD YOUR SKU (Material Codes Key on page 188)



**[SERIES TYPE]**

SF12 -  
SANITARY FLANGE 3/4"

**[BODY TYPE]**

M - MALE  
F - FEMALE

**[FLOW TYPE]**

O - OPEN FLOW  
V - VALVE FLOW

**[MATERIAL]**

A - ACETAL  
K - KYNAR®  
P - POLYPROPYLENE  
S - POLYSULFONE  
N - GF BLACK NYLON

**[BUTTON COLOR]**

(female only)  
O - ORANGE  
W - WHITE  
R - RED  
B - BLUE

**[O-RING TYPE]**

B - BUNA-N  
E - EPDM  
S - SILICONE  
V - VITON  
NL - NON-LUBE SILICONE

**[SPRING TYPE]**

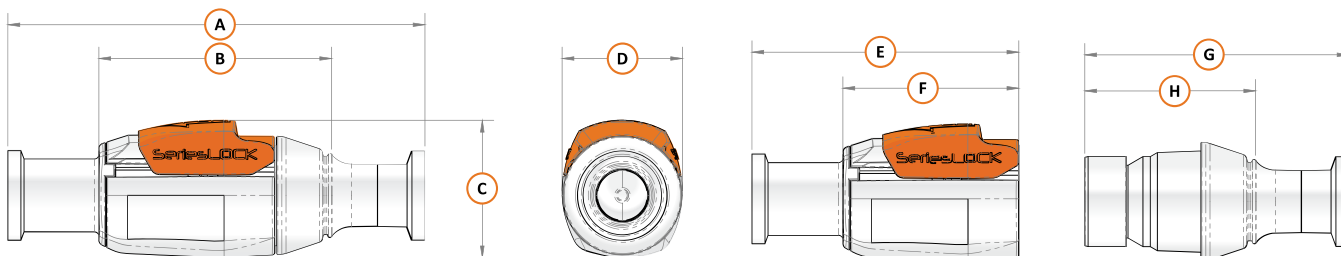
S - 302 SST  
E - NON-METALLIC

**[BARB SIZE]**

2 - 1/8"  
3 - 3/16"  
4 - 1/4"  
5 - 5/16"  
6 - 3/8"  
8 - 1/2"  
10 - 5/8"  
12 - 3/4"

**[PACKAGE QTY]**

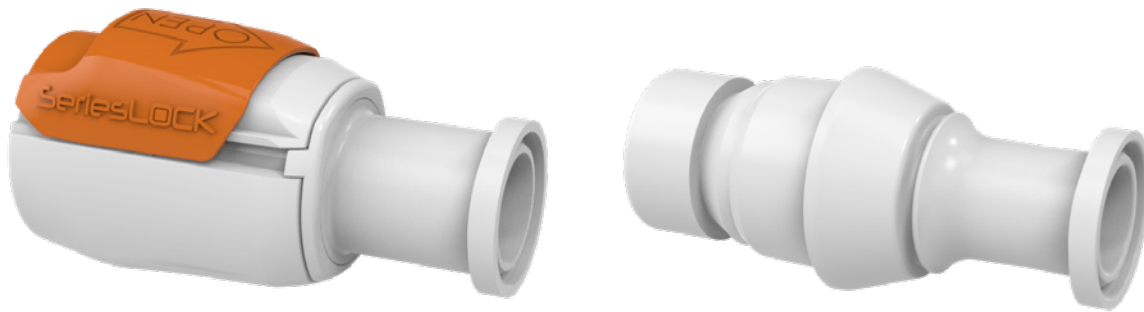
01 - SINGLE UNIT  
10 - 10 PK



### 3/4" MINI SANITARY FITTINGS SF12 (DIMENSION IN INCHES)

Equivalent Tubing Size	A	B	C	D	E	F	G	H
1/8"							2.11	1.33
3/16"							2.11	1.33
1/4"	3.9	1.92	1.12	0.99	2.57	1.57	2.37	1.43
5/16"	3.9	1.92	1.12	0.99	2.57	1.57	2.37	1.43
3/8"	3.9	1.92	1.12	0.99	2.57	1.57	2.37	1.43
1/2"	4.58	2.56	1.5	1.32	2.93	1.93	2.9	1.88
5/8"	4.58	2.56	1.5	1.32	2.93	1.93	2.9	1.88
3/4"	4.58	2.56	1.5	1.32	2.93	1.93	2.9	1.88

# 3/4" Mini Sanitary Flange Fittings (CONTINUED)



VALVED ASSEMBLY WEIGHTS (GR)						
Tubing Size	Female Valved Assembly			Male Valved Assembly		
	PP	PVDF	GFBN	PP	PVDF	GFBN
1/8"				6	8	7
3/16"				6	8	7
1/4"	11	18	17	9	13	12
5/16"	11	18	17	9	13	12
3/8"	11	19	17	9	13	12
1/2"	25	42	38	20	24	22
5/8"	25	42	38	20	24	22
3/4"	27	45	38	20	24	22

OPEN ASSEMBLY WEIGHTS (GR)						
Tubing Size	Female Open Assembly			Male Open Assembly		
	PP	PVDF	GFBN	PP	PVDF	GFBN
1/8"				4	7	6
3/16"				4	7	6
1/4"	10	17	15	6	12	11
5/16"	10	17	15	6	12	11
3/8"	10	17	15	6	12	11
1/2"	22	39	34	14	20	16
5/8"	22	39	34	14	20	16
3/4"	24	39	34	14	20	16

# 1-1/2" Sanitary Flange Fittings

## HOW TO BUILD YOUR SKU (Material Codes Key on page 188)



**[SERIES TYPE]**

SF24 -  
SANITARY FLANGE 1-1/2"

**[BODY TYPE]**

M - MALE  
F - FEMALE

**[FLOW TYPE]**

O - OPEN FLOW  
V - VALVE FLOW

**[MATERIAL]**

A - ACETAL  
K - KYNAR®  
P - POLYPROPYLENE  
S - POLYSULFONE  
N - GF BLACK NYLON

**[BUTTON COLOR]**

(female only)  
O - ORANGE  
W - WHITE  
R - RED  
B - BLUE

**[O-RING TYPE]**

B - BUNA-N  
E - EPDM  
S - SILICONE  
V - VITON  
NL - NON-LUBE SILICONE

**[SPRING TYPE]**

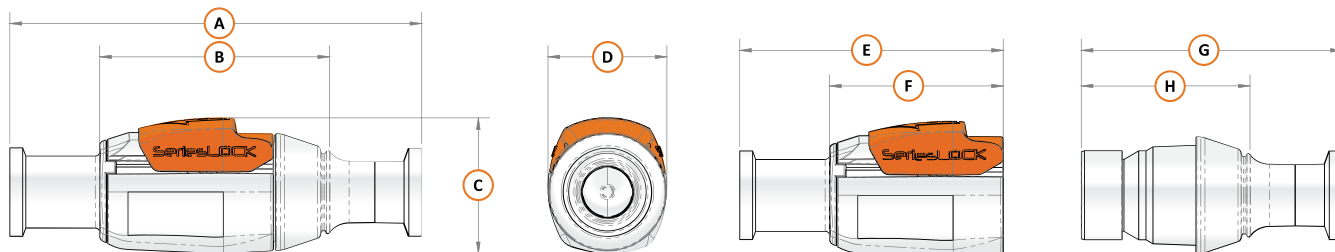
S - 302 SST  
E - NON-METALLIC

**[BARB SIZE]**

2 - 1/8"  
3 - 3/16"  
4 - 1/4"  
5 - 5/16"  
6 - 3/8"  
8 - 1/2"  
10 - 5/8"  
12 - 3/4"

**[PACKAGE QTY]**

01 - SINGLE UNIT  
10 - 10 PK



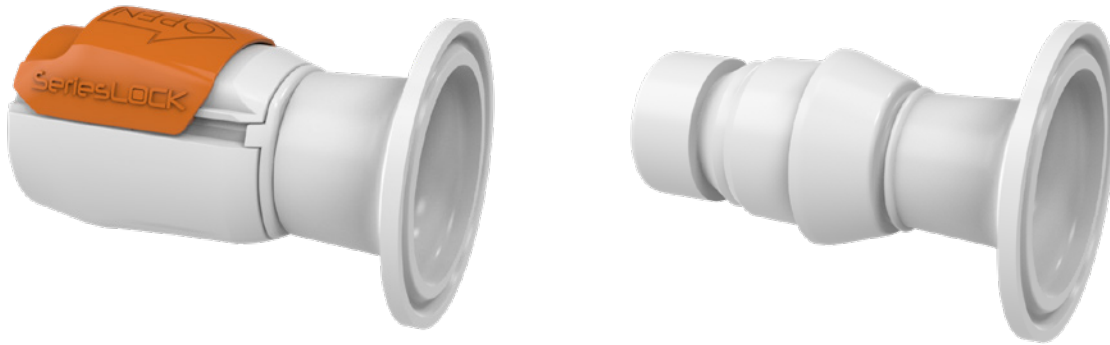
### 1-1/2" SANITARY FITTINGS SF24 (DIMENSION IN INCHES)

Equivalent Tubing Size	A	B	C	D	E	F	G	H
1/2"	4.58	2.56	1.5	1.32	2.93	1.93	2.9	1.88
5/8"	4.58	2.56	1.5	1.32	2.93	1.93	2.9	1.88
3/4"	4.58	2.56	1.5	1.32	2.93	1.93	2.9	1.88

**NEW**  
Sanitary flange tri-clamp  
available on page 86.



# 1-1/2" Sanitary Flange Fittings (CONTINUED)



VALVED ASSEMBLY WEIGHTS (GR)						
Tubing Size	Female Valved Assembly			Male Valved Assembly		
	PP	PVDF	GFBN	PP	PVDF	GFBN
1/2"	31	53	48	26	32	29
5/8"	31	53	48	26	32	29
3/4"	31	53	48	26	32	29

OPEN ASSEMBLY WEIGHTS (GR)						
Tubing Size	Female Open Assembly			Male Open Assembly		
	PP	PVDF	GFBN	PP	PVDF	GFBN
1/2"	28	50	44	20	29	23
5/8"	28	50	44	20	29	23
3/4"	28	50	44	20	29	23

## SALES / ORDER INQUIRIES:

📞 970-667-2728 📠 970-667-3204

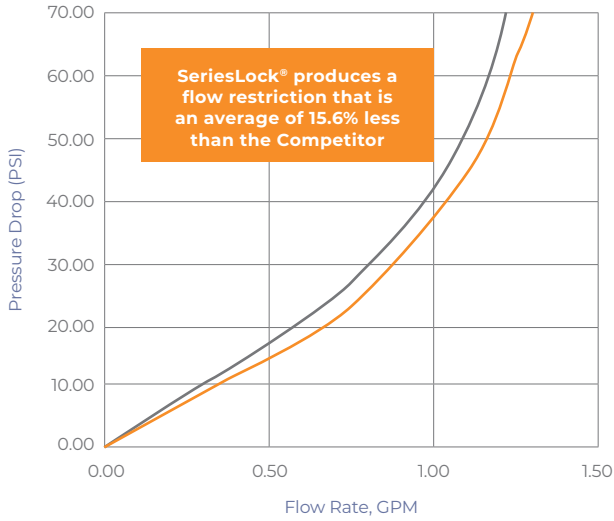
✉ sales@eldonjames.com

🌐 eldonjames.com/serieslock-quick-disconnect-fittings

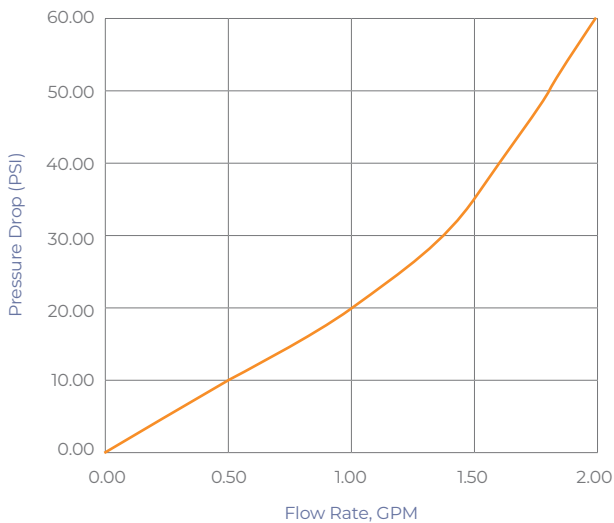


Learn more about SeriesLock®

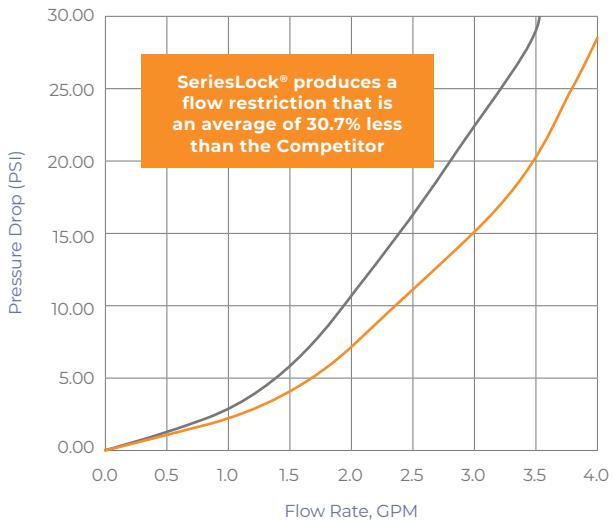
# Water Flow Test Data



WATER FLOW - 1/8" BARB FITTINGS			
Flow Rate (GPM)	Pressure Drop (PSI)		Percent Change (PSI) <sup>2</sup>
	SeriesLock®	Competitor	
0.00	0.00	0.00	0.00%
0.60	16.08	20.00	-19.61%
0.90	31.01	35.00	-11.40%
1.10	43.20	50.00	-13.61%
1.20	54.24	66.00	-17.82%

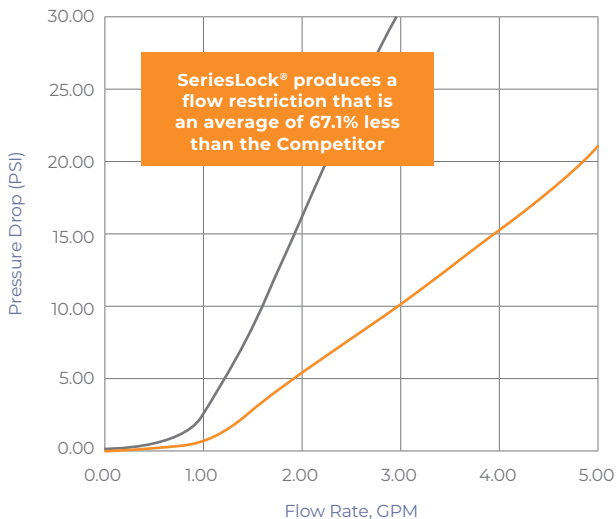


WATER FLOW - 3/16" BARB FITTINGS			
Flow Rate (GPM)	Pressure Drop (PSI)		Percent Change (PSI) <sup>2</sup>
	SeriesLock®	Competitor	
0.00	0.00	0.00	0.00%
0.60	16.08	0.00	0.00%
0.90	31.01	0.00	0.00%
1.10	43.20	0.00	0.00%
1.20	54.24	0.00	0.00%

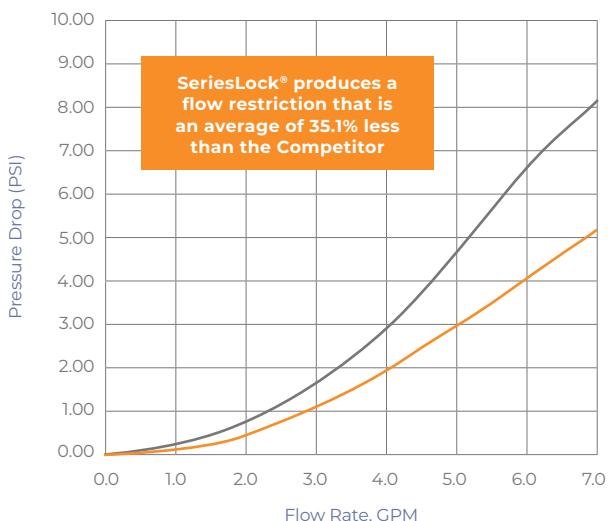


WATER FLOW - 1/8" BARB FITTINGS			
Flow Rate (GPM)	Pressure Drop (PSI)		Percent Change (PSI) <sup>2</sup>
	SeriesLock®	Competitor	
0.00	0.00	0.00	0.00%
1.51	4.07	6.06	-32.83%
3.46	19.71	28.15	-29.98%
3.52	20.47	29.90	-31.53%
3.60	21.56	30.09	-28.35%

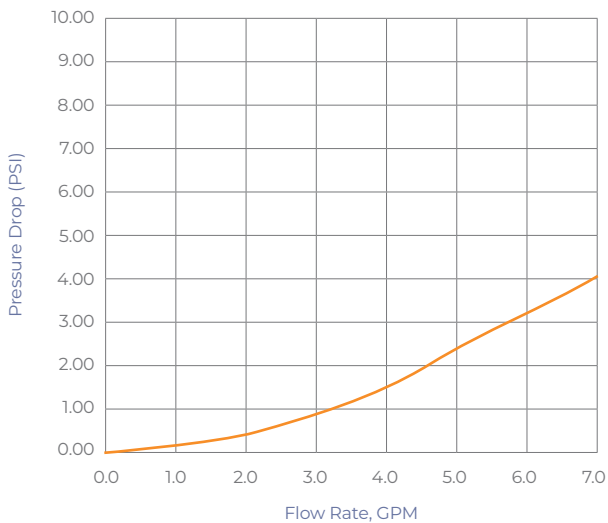
# Water Flow Test Data (CONTINUED)



WATER FLOW - 3/8" BARB FITTINGS			
Flow Rate (GPM)	Pressure Drop (PSI)		Percent Change (PSI) <sup>2</sup>
	SeriesLock®	Competitor	
0.00	0.00	0.00	0.00%
1.06	0.96	2.84	-66.10%
2.85	8.01	28.85	-72.23%
3.17	9.75	31.45	-68.99%
3.62	12.35	31.89	-61.26%



WATER FLOW - 1/2" BARB FITTINGS			
Flow Rate (GPM)	Pressure Drop (PSI)		Percent Change (PSI) <sup>2</sup>
	SeriesLock®	Competitor	
0.00	0.00	0.00	0.00%
1.88	0.41	0.70	-40.91%
4.00	1.97	2.90	-32.08%
6.70	4.81	7.74	-37.87%
8.30	5.96	8.50	-29.93%



WATER FLOW - 1/8" BARB FITTINGS			
Flow Rate (GPM)	Pressure Drop (PSI)		Percent Change (PSI) <sup>2</sup>
	SeriesLock®	Competitor	
0.00	0.00	0.00	0.00%
3.36	1.04	0.00	0.00%
5.07	2.40	0.00	0.00%
7.69	4.56	0.00	0.00%
8.92	4.69	0.00	0.00%

No competitor product commercially available at this time

# Cv Values

SERIESLOCK® SMALL, Cv IN GALLONS PER MINUTE					
		1/8 MV	1/8 MO	3/16 MV	3/16 MO
		B-MV-PP-SS-2	B-MO-P-2	B-MV-P-SS-3	B-MO-P-3
1/8 FV	B-FV-PO-SS-2	0.15	0.15	0.23	0.23
1/8 FO	B-FO-PO-SS-2	0.14	0.14	0.21	0.22
3/16 FV	B-FV-PO-SS-3	0.19	0.18	0.26	0.26
3/16 FO	B-FO-PO-SS-3	0.19	0.19	0.27	0.29

SERIESLOCK® MEDIUM, Cv IN GALLONS PER MINUTE					
		1/4 MV	1/4 MO	3/8 MV	3/8 MO
		B-MV-PP-SS-4	B-MO-P-4	B-MV-P-SS-6	B-MO-P-6
1/4 FV	B-FV-PO-SS-4	0.44	0.42	0.58	0.59
1/4 FO	B-FO-PO-SS-4	0.43	0.45	0.51	0.62
3/8 FV	B-FV-PO-SS-6	0.56	0.54	0.98	1.14
3/8 FO	B-FO-PO-SS-6	0.54	0.60	0.74	1.43

SERIESLOCK® LARGE, Cv IN GALLONS PER MINUTE					
		1/2 MV	1/2 MO	3/4 MV	3/4 MO
		B-MV-PP-SS-8	B-MO-P-8	B-MV-P-SS-12	B-MO-P-12
1/2 FV	B-FV-PO-SS-8	2.6	2.7	3.5	3.7
1/2 FO	B-FO-PO-SS-8	2.5	3.3	2.8	6.5
3/4 FV	B-FV-PO-SS-12	3.4	3.6	3.9	4.8
3/4 FO	B-FO-PO-SS-12	3.2	5.7	3.6	11.8

# General Information

SERIESLOCK® COMPONENTS		
Materials		
Component	Standard	Option
Main Body Components	Polypropylene (PP)	Acetal (AC)
		Glass Filled Black Nylon (GFBN)
		Polysulfone (PS)
		Polyvinylidene fluoride (PVDF)
Slide Button / Main Latch	Polycarbonate	
Slide Button / Main Latch Color	Orange	Natural, Red, Blue - Special Order Only
Springs	Stainless	Non-Magnetic
Seals	Buna-N	EPDM, Silicone and Viton
		Non-Lube (Silicone Only)

INTERNAL SURFACE AREAS (IN <sup>2</sup> )	
Small Body ( -2 / -3 )	
Open Female	0.88
Valved Female	0.97
Open Male	2.67
Valved Male	1.55
Medium Body ( -4 / -5 / -6 )	
Open Female	1.64
Valved Female	1.99
Open Male	3.72
Valved Male	2.37
Large Body ( -8 / -10 / -12 )	
Open Female	5.01
Valved Female	6.11
Open Male	8.99
Valved Male	6.36

# General Information (CONTINUED)

SERIESLOCK® COMPONENTS	
Materials	
<b>Connections</b>	1/16" to 3/4" Tubing
<b>Lubricants</b>	PFPE (biocompatible, inert)
<b>Pressure</b>	Vacuum to 90psi, 6.2 bar
<b>Temperature (Continuous)</b>	Polysulfone (PS)
	AC: 32°F to 180°F (0°C to 82°C)
	GFBN: 32°F to 282°F (0°C to 139°C)
	PP: 32°F to 160°F (0°C to 71°C)
	PVDF: 32°F to 250°F (0°C to 121°C)
	PS: -40°F to 282°F (-40°C to 139°C)
<b>Spillage (At Rated Pressures)</b>	Small Housing (1/8" to 3/16" Tubing) <0.05cc per disconnect
	Medium Housing (1/4" to 3/8" Tubing) <0.05cc per disconnect
	Large Housing (1/2" to 3/4" Tubing) <0.1cc per disconnect
	Micro Housing (1/16" to 1/4" Tubing) <0.05cc per disconnect