

# Couplers

## STRAIGHT COUPLERS | REDUCTION COUPLERS

### PLASTIC HOSE BARB COUPLING

Our medical and pharmaceutical grade plastic tube couplers are RoHS (Restriction of Hazardous Substances) compliant, meet USP Class VI requirements, and are animal derivative-free. Transportation and automotive barb couplings meet automotive standards and approvals. Browse our diverse selection of PVC-free straight and reduction couplers in a variety of durable and antimicrobial materials in sizes from 1/32 of an inch to 1 inch.

Eldon James features industry leading straight couplers and reduction couplers that are perfect for conjoining tubes of any kind. Safe for use in medical practices, our straight couplers and reduction couplers feature innovative single barb technology to stay firmly entrenched in the tubing.

We specialize in producing safe, efficient, and high quality products, all of which are made from Eco-friendly resins that won't leach pollutants or contaminate water, liquBarbs, gases, soil, or even other recyclable materials.

The benefits of PVC-free materials are great and varied, from safe transfer and storage of medical liquBarbs to easy disposal. Our couplers are non-corrosive, non-abrasive, and made from a variety of natural materials that are RoHS compliant and long-lasting when used correctly.

### ABOUT OUR NATURAL MATERIALS:

All Cleanroom Manufactured materials are ISO Class 7. *All QC items in this section are available as a Special Order.*

#### Medical Nylon (MN)

Nylon, which exhibits excellent tensile strength with moderate stiffness and high impact resistance. Great for medical uses to connect multiple tubes with fuels, lubricants, and many other chemicals.

#### Natural Nylon (NN)

Natural Nylon exhibits excellent tensile strength with moderate stiffness and high impact resistance. Great for automotive and industrial use with fuels, lubricants, and many chemicals.

#### Natural Kynar® 740 (NK7)

Offers excellent chemical resistance, inherent flame resistance, high gamma radiation resistance, good UV and weather resistance, good mechanical properties, low moisture absorption and good machinability.

#### Polypropylene (PP)

Polypropylene is a very versatile material and formulated for biomedical and bioprocess applications. It is radiation stable and is resistant to solvents, chemicals, water and other inorganic environments.



**ELDON JAMES' COUPLERS ARE EMPLOYED IN THE AUTOMOTIVE, BEVERAGE, AND SPECIFICALLY BIO-MEDICAL INDUSTRIES.**



# Straight Couplers

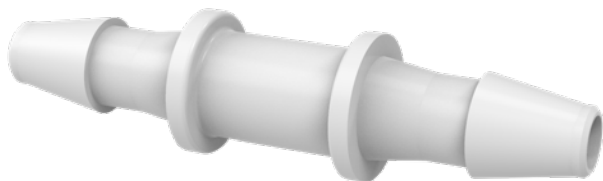
QC =  
Cleanroom  
Manufactured

HOW TO BUILD YOUR SKU (Material Codes Key on page 188)

PRODUCT NO. [MATERIAL CODE]-[Cleanroom Manufactured(QC)]



CO-1-200AC-QC



## **CO-1-200** Straight Coupler • 1/16 inch Barb

AC • BN • GFBN • NK7 • NN • PP • PVDF • WN • WP **QC** MN • NK7 • PP

## **CO-1.5-200** Straight Coupler • 3/32 inch Barb

AC • BN • GFBN • NK7 • NN • PP • PVDF • WN • WP **QC** MN • NK7 • PP

## **CO-2** Straight Coupler • 1/8 inch Barb

SS

## **CO-2-200** Straight Coupler • 1/8 inch Barb

AC • BN • GFBN • NK7 • NN • PP • PVDF • WN • WP **QC** MN • NK7 • PP

## **CO-2.5** Straight Coupler • 5/32 inch Barb

AC • BN • GFBN • NK7 • NN • PP • PVDF • SS • WN • WP **QC** MN • NK7 • PP

## **CO-3** Straight Coupler • 3/16 inch Barb

AC • BN • GFBN • NK7 • NN • PP • PVDF • SS • WN • WP **QC** MN • NK7 • PP

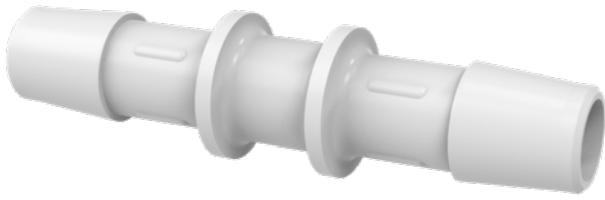
## **CO-4** Straight Coupler • 1/4 inch Barb

AC • BN • GFBN • NK7 • NN • PP • PVDF • SS • WN • WP **QC** MN • NK7 • PP

## **CO-5** Straight Coupler • 5/16 inch Barb

BN • GFBN • NK7 • NN • PP • PVDF • SS • WN • WP **QC** MN • NK7 • PP

# Straight Couplers (CONTINUED)



## CO-6 Straight Coupler • 3/8 inch Barb

AC • BN • GFBN • NK7 • NN • PP • PVDF • SS • WN • WP **QC** MN • NK7 • PP

## CO-8 Straight Coupler • 1/2 inch Barb

AC • BN • GFBN • NK7 • NN • PP • PVDF • SS • WN • WP **QC** MN • NK7 • PP

## CO-10 Straight Coupler • 5/8 inch Barb

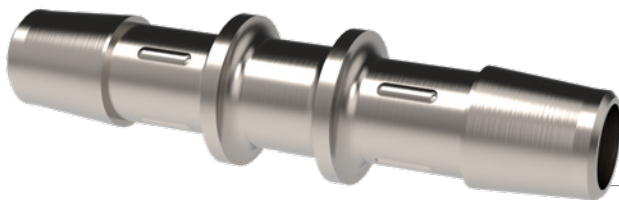
AC • BN • GFBN • NK7 • NN • PP • PVDF • SS • WN • WP **QC** MN • NK7 • PP

## CO-12 Straight Coupler • 3/4 inch Barb

AC • BN • GFBN • NK7 • NN • PP • PVDF • SS • WN • WP **QC** MN • NK7 • PP

## CO-16 Straight Coupler • 1 inch Barb

AC • BN • GFBN • NK7 • NN • PP • PVDF • SS • WN • WP **QC** MN • NK7 • PP



316L Stainless Steel

### SALES / ORDER INQUIRIES:

📞 970-667-2728 📠 970-667-3204

✉️ sales@eldonjames.com

🌐 eldonjames.com/couplers



Shop All  
Couplers

# Reduction Couplers

QC =  
Cleanroom  
Manufactured

HOW TO BUILD YOUR SKU (Material Codes Key on page 188)

PRODUCT NO. [MATERIAL CODE]-[Cleanroom Manufactured(QC)]

C2-1-200MN-QC



## C1.5-1-200 Reduction Coupler • 3/32 x 1/16 inch Barb

AC • BN • GFBN • NK7 • NN • PP • PVDF • WN • WP **QC** MN • NK7 • PP

## C2-1-200 Reduction Coupler • 1/8 x 1/16 inch Barb

AC • BN • GFBN • NK7 • NN • PP • PVDF • WN • WP **QC** MN • NK7 • PP

## C2-1.5 Reduction Coupler • 1/8 x 3/32 inch Barb

SS

## C2.5-1-200 Reduction Coupler • 1/8 x 3/32 inch Barb

AC • BN • GFBN • NK7 • NN • PP • PVDF • WN • WP **QC** MN • NK7 • PP

## C2.5-1.5 Reduction Coupler • 5/32 x 3/32 inch Barb

SS

## C2.5-1.5-200 Reduction Coupler • 5/32 x 3/32 inch Barb

AC • BN • GFBN • NK7 • NN • PP • PVDF • WN • WP **QC** MN • NK7 • PP

## C2.5-2 Reduction Coupler • 5/32 x 1/8 inch Barb

AC • BN • GFBN • NK7 • NN • PP • PVDF • WN • WP **QC** MN • NK7 • PP

## C3-1-200 Reduction Coupler • 3/16 x 1/16 inch Barb

AC • BN • GFBN • NK7 • NN • PP • PVDF • WN • WP **QC** MN • NK7 • PP

# Reduction Couplers (CONTINUED)



## **C3-1.5-200** Reduction Coupler • 3/16 x 3/32 inch Barb

AC • BN • GFBN • NK7 • NN • PP • PVDF • WN • WP **QC** MN • NK7 • PP

## **C3-2** Reduction Coupler • 3/16 x 1/8 inch Barb

AC • BN • GFBN • NK7 • NN • PP • PVDF • WN • WP **QC** MN • NK7 • PP

## **C4-1-200** Reduction Coupler • 1/4 x 1/16 inch Barb

AC • BN • GFBN • NK7 • NN • PP • PVDF • WN • WP **QC** MN • NK7 • PP

## **C4-1.5-200** Reduction Coupler • 1/4 x 3/32 inch Barb

AC • BN • GFBN • NK7 • NN • PP • PVDF • WN • WP **QC** MN • NK7 • PP

## **C4-2** Reduction Coupler • 1/4 x 1/8 inch Barb

AC • BN • GFBN • NK7 • NN • PP • PVDF • SS • WN • WP **QC** MN • NK7 • PP

## **C4-2.5** Reduction Coupler • 1/4 x 5/32 inch Barb

AC • BN • GFBN • NK7 • NN • PP • PVDF • SS • WN • WP **QC** MN • NK7 • PP

## **C4-3** Reduction Coupler • 1/4 x 3/16 inch Barb

AC • BN • GFBN • NK7 • NN • PP • PVDF • SS • WN • WP **QC** MN • NK7 • PP

## **C5-2** Reduction Coupler • 5/16 x 1/8 inch Barb

AC • BN • GFBN • NK7 • NN • PP • PVDF • WN • WP **QC** MN • NK7 • PP

## **C5-2.5** Reduction Coupler • 5/16 x 5/32 inch Barb

AC • BN • GFBN • NK7 • NN • PP • PVDF • WN • WP **QC** MN • NK7 • PP

# Reduction Couplers (CONTINUED)

## **C5-3** Reduction Coupler • 5/16 x 3/16 inch Barb

AC • BN • GFBN • NK7 • NN • PP • PVDF • WN • WP **QC** MN • NK7 • PP

## **C5-4** Reduction Coupler • 5/16 x 1/4 inch Barb

AC • BN • GFBN • NK7 • NN • PP • PVDF • SS • WN • WP **QC** MN • NK7 • PP

## **C6-2** Reduction Coupler • 3/8 x 1/8 inch Barb

AC • BN • GFBN • NK7 • NN • PP • PVDF • WN • WP **QC** MN • NK7 • PP

## **C6-2.5** Reduction Coupler • 3/8 x 5/32 inch Barb

AC • BN • GFBN • NK7 • NN • PP • PVDF • WN • WP **QC** MN • NK7 • PP

## **C6-4** Reduction Coupler • 3/8 x 1/4 inch Barb

AC • BN • GFBN • NK7 • NN • PP • PVDF • SS • WN • WP **QC** MN • NK7 • PP

## **C6-5** Reduction Coupler • 3/8 x 5/16 inch Barb

AC • BN • GFBN • NK7 • NN • PP • PVDF • WN • WP **QC** MN • NK7 • PP

## **C8-4** Reduction Coupler • 1/2 x 1/4 inch Barb

AC • BN • GFBN • NK7 • NN • PP • PVDF • SS • WN • WP **QC** MN • NK7 • PP

## **C8-5** Reduction Coupler • 1/2 x 5/16 inch Barb

AC • BN • GFBN • NK7 • NN • PP • PVDF • WN • WP **QC** MN • NK7 • PP

## **C8-6** Reduction Coupler • 1/2 x 3/8 inch Barb

AC • BN • GFBN • NK7 • NN • PP • PVDF • WN • WP **QC** MN • NK7 • PP

## **C10-4** Reduction Coupler • 5/8 x 1/4 inch Barb

AC • BN • GFBN • NK7 • NN • PP • PVDF • WN • WP **QC** MN • NK7 • PP

## **C10-5** Reduction Coupler • 5/8 x 5/16 inch Barb

AC • BN • GFBN • NK7 • NN • PP • PVDF • WN • WP **QC** MN • NK7 • PP

# Reduction Couplers (CONTINUED)



## **C10-6** Reduction Coupler • 5/8 x 3/8 inch Barb

AC • BN • GFBN • NK7 • NN • PP • PVDF • WN • WP **QC** MN • NK7 • PP

## **C10-8** Reduction Coupler • 5/8 x 1/2 inch Barb

AC • BN • GFBN • NK7 • NN • PP • PVDF • SS • WN • WP **QC** MN • NK7 • PP

## **C12-6** Reduction Coupler • 3/4 x 3/8 inch Barb

AC • BN • GFBN • NK7 • NN • PP • PVDF • WN • WP **QC** MN • NK7 • PP

## **C12-8** Reduction Coupler • 3/4 x 1/2 inch Barb

AC • BN • GFBN • NK7 • NN • PP • PVDF • SS • WN • WP **QC** MN • NK7 • PP

## **C12-10** Reduction Coupler • 3/4 x 5/8 inch Barb

AC • BN • GFBN • NK7 • NN • PP • PVDF • WN • WP **QC** MN • NK7 • PP

## **C16-8** Reduction Coupler • 1 x 1/2 inch Barb

AC • BN • GFBN • NK7 • NN • PP • PVDF • WN • WP **QC** MN • NK7 • PP

## **C16-10** Reduction Coupler • 1 x 5/8 inch Barb

AC • BN • GFBN • NK7 • NN • PP • PVDF • WN • WP **QC** MN • NK7 • PP

## **C16-12** Reduction Coupler • 1 x 3/4 inch Barb

AC • BN • GFBN • NK7 • NN • PP • PVDF • WN • WP **QC** MN • NK7 • PP

## SALES / ORDER INQUIRIES:

📞 970-667-2728 📠 970-667-3204 ✉ sales@eldonjames.com 🌐 eldonjames.com/couplers