

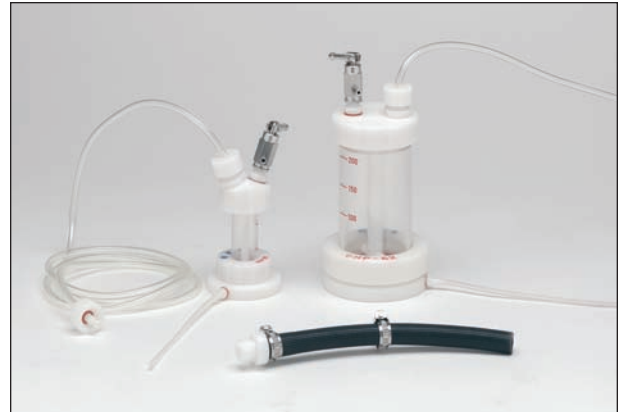
Stirred Cells

- **Tangential flow design** increases membrane life and sample throughput
- **Teflon stir bar** is mounted to stay clear of the membrane
- **All contact surfaces are non-metal**
- **Clear plastic reservoir** allows for fluid level and sample condition to be visually monitored
- **Removable top cap** (UHP 25, 43, and 62) and sample port (UHP 76, 90, 150) allow sample to be added during filtration
- **Pressure relief valve** supplied

APPLICATIONS

- Desalting and concentrating proteins, enzymes, virus, and other biological samples
- Filtering fluids that contain a heavy particle burden, e.g. bacteria, silts

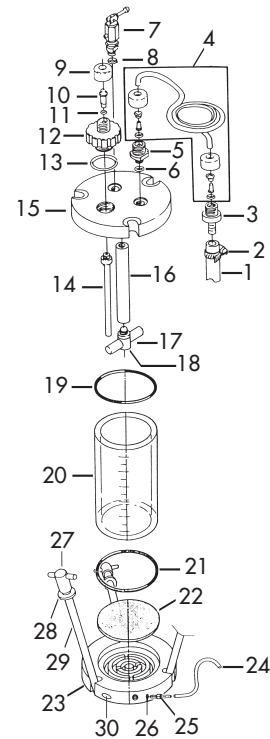
Note: Cells are not autoclavable



Stirred Cells

SPECIFICATIONS

	UHP 25	UHP 43	UHP 62	UHP 76	UHP 90	UHP 150
Materials:						
End caps and stir rod	Polyacetal					
Cell barrel	Polycarbonate			Acrylic		
O-rings	Silicone					
Support screen	Polypropylene					
Stir bar	PTFE					
Connections:						
Pressurizing	M10					
Vent valve	10 mm screw, female					
Pressure:						
Maximum	0.5 MPa (73 psi)					
Vent relief valve	0.44 ± 0.04 MPa (63 ± 6 psi)					
Max. Operating Temperature	40°C					
Dimensions:						
Diameter	60 mm	68 mm	82 mm	117 mm	135 mm	198 mm
Height	138 mm	161 mm	190 mm	211 mm	230 mm	268.5 mm
Weight:	0.05 kg	0.18 kg	0.35 kg	0.46 kg	1.4 kg	3.1 kg
	0.11 lb	0.40 lb	0.77 lb	1.01 lb	3.08 lb	6.82 lb
Volumes:						
Capacity	10 mL	70 mL	200 mL	450 mL	600 mL	2000 mL
Min. recoverable upstream	0.5 mL	2.5 mL	4.5 mL	10 mL	15 mL	60 mL
Downstream holdup	1.3 mL	4.6 mL	9.1 mL	13 mL	20 mL	41 mL
Membrane Compatibility:						
Membrane filter size	25 mm	43 mm	62 mm	76 mm	90 mm	150 mm
Filtration area	3.5 cm ²	11.5 cm ²	27.0 cm ²	38.5 cm ²	54.5 cm ²	162 cm ²



UHP 76, 90, 150

ORDERING INFORMATION

Model	UHP 25	UHP 43	UHP 62	UHP 76	UHP 90	UHP 150
Catalog No.	341000	341100	341200	341300	341400	341500

Replacement Parts

Inlet Assembly

		All Models
1	Pressurizing hose	341001
2	Hose clamp	341002
3	Male hose adapter	341003
4	Hose adapter assembly	341033
5	Inlet nipple adapter	341115
6	Inlet adapter O-ring (silicone)	341013
7	Vent/relief valve (with washer)	341012
8	Vent valve O-ring (silicone)	341008

Inlet Port Assembly (UHP 76, 90, 150)

		UHP 76	UHP 90	UHP 150
9	End cap adapter	341006		
10	Inlet port adapter	341438		
11	Inlet cap O-ring	341436		
12	Sample port inlet cap	341335	341435	341539
13	Sample port adapter O-ring	341336	341432	341532
14	Sample port tube	341334	341434	341534

Body

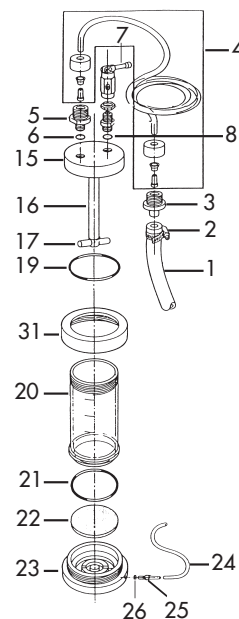
		UHP 25	UHP 43	UHP 62	UHP 76	UHP 90	UHP 150
15	Inlet end cap	341026	341126	341226	341326	341425	341525
16	Stir rod	341027	341127	341227	341327	341426	341526
17	Stir bar and adapter	341028	341128	341228	341328	341427	341527
18	Set bolt for stir bar	-	-	-	341331	341431	341531
19	Inlet cap O-ring (silicone)	341030	341130	341230	341322	341422	341522
21	Outlet cap O-ring (silicone)	341022	341122	341222			
20	Cell barrel	341024	341124	341224	341324	341424	341524
22	Support screen (polypropylene)	341021	341121	341221	341321	341421	341521
23	Outlet end cap	341020	341120	341220	341320	341420	341520
31	Locking ring	341025	341125	341225	-	-	-

Outlet Assembly

		UHP 25, 43, 62	UHP 76	UHP 90	UHP 150
24	Outlet tubing	341019	341319	341419	341519
25	Outlet adapter	341018	341318	341418	341518
26	Outlet adapter O-ring	341016	341316	341416	341516

Clamp Assembly (UHP 76, 90, 150)

		UHP 76	UHP 90	UHP 150
27	Nut for tie rod	341332	341441	341441
28	Washer for tie rod	341331	341440	341440
29	Tie rod	341330	341439	341543
30	Set pins	341342	341442	341546



UHP 25, 43, 62



Cell on Stirrer