

PC Oscilloscope Model MTX 162

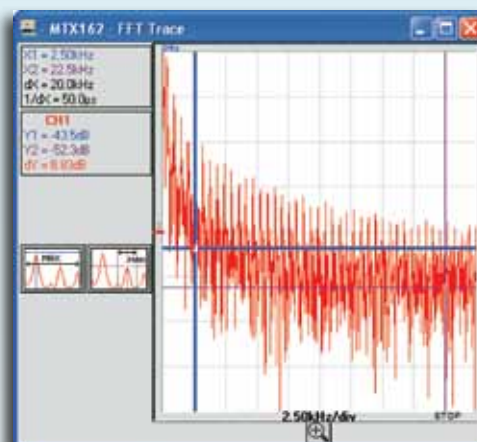


SPECIFICATIONS

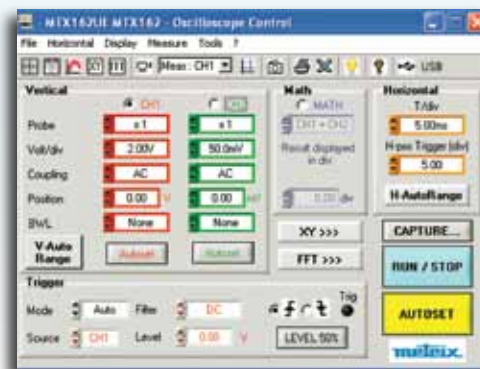
MODEL	MTX 162
INTERFACE	
Screen Specifications	Color PC screen (min. resolution: 1024 x 768)
Display Mode	8 x 10 div.- Multi-windowing (control panel, trace, zoom, FFT, etc.)
Traces on Screen	4 traces + 4 references
Screen Control	"Windows-like" & online help – all commands available via mouse
VERTICAL	
Vertical Sensitivity	5mV to 100V/div
Bandwidth	60MHz (bandwidth limiter: 15MHz, 1.5MHz or 5kHz)
Channels	2 channels, class 1, common ground
HORIZONTAL	
Time Base Speed	32 ranges from 5ns to 100s/div
TRIGGER	
Mode	Auto, Triggered, One-shot ROLL, auto-level at 50%
Source	CH1, CH2, Mains
Type	Rising or falling edge, adjustable pretriggering from 0 to 100%
DIGITAL MEMORY	
Max. Sampling Speed	Repetitive = 20GS/s One-shot = 50MS/s
Vertical Resolution	8 bits
Memory Capacity	Depth = 50,000 points – storage capacity depends on PC configuration used
SPO (SMART PERSISTENCE OSCILLOSCOPE)	
Duration of Persistence	Analog remanent mode
MEASUREMENT PROCESSING	
FFT Analyzer/ MATH Functions	FFT, +, -, x, /
Manual Cursors	dv, dt, 1/dt, phase – cursors linked or unlinked to trace
Automatic Measurements	2 or 19 measurements out of 19 + automatic phase On-any type of curve Markers and limits
RECORDER MODE	
Duration/Sampling	Dedicated ROLL mode from 2s to 33min

Features

- 2-channel/60MHz
- Oscilloscope with FFT and recorder
- Sampling rate 50MS/s in one-shot mode and 20GS/s in ETS mode
- Detects 10ns transients
- 8-bit A/D converter
- Vertical sensitivities of 250µV-100V/div (300V CAT II)
- Advanced trigger modes and SPO (Smart Persistence Oscilloscope) analysis
- Stackable with direct PC connection via USB or Ethernet
- PC advantages:
 - Large screen with high resolution and multi-windowing
 - Unlimited storage capacity
 - Windows environment (printing, standard files, etc.)
 - Local or remote Ethernet universal communication
 - PC operating software and LabWindows/LabView drivers



Real time trace



Typical PC setup screen

CATALOG NO.	DESCRIPTION
2150.14	PC Scope Module Model MTX 162UE (2-channel, 60MHz)
2150.15	PC Scope Module Model MTX 162UEW (2-channel, WiFi, 60MHz)