

# MOTOR101A

## POWER CYCLE

### DATA LOGGER SYSTEM



#### Features

- No External Power Required
- 150mA Trip Point
- Compatible up to 200 Amps
- Real Time Operation
- Miniature Size
- Reusable
- User-friendly
- Low Cost

#### Benefits

- Simple Setup and Installation
- Minimal Long-Term Maintenance
- Long-Term Field Deployment

#### Applications

- Energy Audits
- Equipment Monitoring
- Heating and Cooling Systems
- Fans
- Power Supply On/Off
- Monitoring Gas, Water or Electric Pumps
- Time Studies

The Motor101A measures and records on and off status changes for motors or other equipment drawing up to 200 Amps. The state change occurs when the current switch exceeds the 150mA set point. This allows for most basic equipment to be monitored.

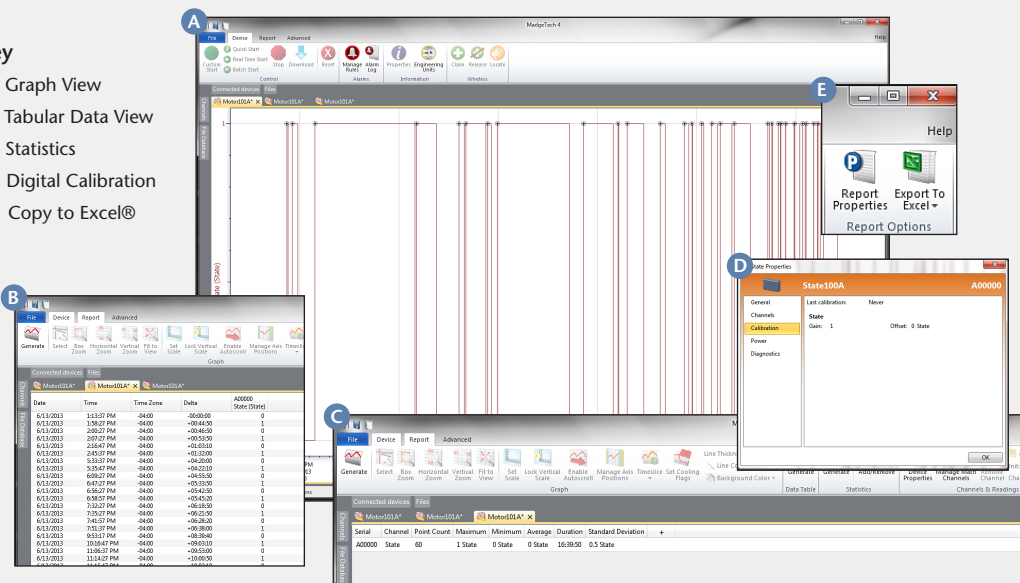
The current switch monitors whether there is current passing through a wire around which it is clamped. When the current exceeds 150mA's, the output changes and provides a voltage for the Motor101A to measure. The device can hold up to 406,323 state changes, but memory will only be used if the status has changed. The device can be programmed to check for status changes 4 times per second up to once every 24 hours.



## MADGETECH DATA LOGGER SOFTWARE

#### Key

- A** Graph View
- B** Tabular Data View
- C** Statistics
- D** Digital Calibration
- E** Copy to Excel®



#### Software Features:

- Multiple graph overlay
- Statistics
- Digital calibration
- Zoom in/ zoom out
- Lethality equations (F0, PU)
- Mean Kinetic Temperature
- Full time zone support
- Data annotation
- Min./Max./Average lines
- Data table view
- Automatic report generation
- Summary view
- Multilingual

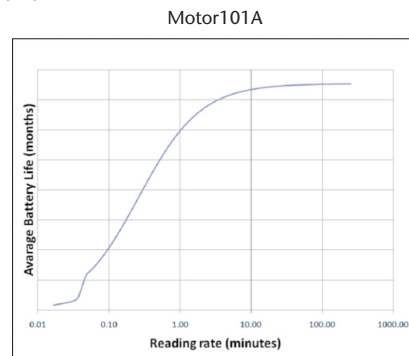
# MOTOR101A SPECIFICATIONS\*

<b>Amperage Range:</b>	0.15-200 Amps
<b>Trip Point:</b>	0.15A (150mA) fixed (200mA AC for 50Hz operation)
<b>Status Output (max.):</b>	N.O. 1.0A@30VAC/DC
<b>Housing:</b>	Split Core
<b>Reading Rate:</b>	4Hz to 1 every 24 hours
<b>Memory:</b>	406,323 readings; software configurable memory wrap
<b>Wrap Around:</b>	Yes
<b>Start Modes:</b>	<ul style="list-style-type: none"> <li>• Immediate start</li> <li>• Delay start up to 18 months</li> <li>• Multiple pushbutton start/stop</li> </ul>
<b>Multiple Start/Stop Mode:</b>	<p>Start and stop the device multiple times without having to download data or communicate with a PC</p> <p>To start the device: Press and hold the pushbutton for 5 seconds, the green LED will flash during this time. The device has started logging.</p> <p>To stop the device: Press and hold the pushbutton for 5 seconds, the red LED will flash for three seconds and then the green LED will flash for two seconds. The device has stopped logging.</p>
<b>Multiple Start/Stop Mode Activation:</b>	
<b>Real Time Recording:</b>	<p>The device may be used with PC to monitor and record data in real-time</p> <p>Green LED blinks: 10 second rate to indicate logging 15 second rate to indicate delay start mode</p>
<b>LED Functionality:</b>	<p>Red LED blinks: 10 second rate to indicate low battery and/or full memory</p>
<b>Password Protection:</b>	An optional password may be programmed into the device to restrict access to configuration options. Data may be read out without the password.

**Engineering Units:** Native measurement units can be scaled to display measurement units of another type such as on/off, open/closed and more.

**Battery Type:** 3.6V lithium battery included; **user replaceable**

**Battery Life:** 10 years typical, dependent upon frequency and duty cycle



Graph display of the device recording in a 25°C environment.

**Time Accuracy:** ±1 minute/month (at 20°C/68°F, stand alone data logging)

**Computer Interface:** USB (interface cable required); 115,200 baud

**Software:** XP SP3/Vista/Windows 7/Windows 8

**Operating Environment:** -15°C to +40°C (5°F to +104°F), 10%RH to 90%RH non-condensing

**Dimensions:** Data Logger: 1.4" x 2.2" x 0.6" (36mm x 56mm x 16mm)

Current Switch: 2.1" x 3.5" x 1.0" (54mm x 89mm x 26mm)

**Weight:** Without IFC200: 4oz (113g)  
With IFC200: 9oz (255g)

**Materials:** ABS Plastic

**Approvals:** CE

**BATTERY WARNING: FIRE, EXPLOSION, AND SEVERE BURN HAZARD. DO NOT SHORT CIRCUIT, CHARGE, FORCE OVER DISCHARGE, DISASSEMBLE, CRUSH, PENETRATE OR INCINERATE. BATTERY MAY LEAK OR EXPLODE IF HEATED ABOVE 80°C (176°F).**

\*SPECIFICATIONS ARE SUBJECT TO CHANGE WITHOUT NOTICE. SPECIFIC WARRANTY AND REMEDY LIMITATIONS APPLY. CALL 1-603-456-2011 OR GO TO WWW.MADGETECH.COM FOR DETAILS.

## ORDERING INFORMATION

MODEL	DESCRIPTION	PRICE (U.S.)
Motor101A-C	Machinery On/Off Status Data Logging System (includes data logger, current switch and IFC200 interface cable)	\$249.00
Motor101A-NC	Machinery On/Off Status Data Logging System (data logger and current switch)	\$199.00
IFC200	Software, manual and USB interface cable	\$119.00
LTC-7PN	Replacement battery for Motor101A	\$10.00

ASK ABOUT  
OUR OTHER  
DATA  
LOGGERS

Temperature  
Humidity  
Pressure  
pH  
Level  
Shock  
LCD Display  
Pulse/Event/State  
Current  
Voltage  
Wireless  
Intrinsically Safe  
Spectral Vibration  
Motion